

EARL STONHAM RECORDER

Coronation Edition



~ SPRING 2023 ~

THE PARISH MAGAZINE
FOR EARL STONHAM

Email: Recorder@btinternet.com
Website: www.earlstonham.org.uk

EARL STONHAM VILLAGE HALL

Friday 5 May 2023

7.30pm

Join us at the Village Hall for
a Coronation Supper with
entertainment by Stonham
Theatre Group

£12 per head

Drinks available at the Bar



Sunday 7 May 2023

12.30pm

“Bring & Share” Lunch at
the Village Hall

We are planning a lunch,
so please bring along a
contribution to share

Drinks available at the Bar



**Numbers for the Supper are limited so
book early to avoid disappointment**

Ring Deb on 711461

or email Recorder@btinternet.com

EARL STONHAM RECORDER

PUBLISHED BY THE PARISH COUNCIL
ISSUE NO 255 – SPRING 2023

EARL STONHAM PARISH COUNCIL NEWS



Welcome to the Spring edition of the Recorder, which is also available online on the Village Website. The spell of wet and cold weather we experienced over the winter has given way over the last week or so, to bright and slightly warmer conditions albeit with a possibility of a cold snap returning later in February. Hopefully this will herald the arrival of Spring and warmer, drier weather.

Christmas seems a long time ago now although we had a reminder of it at the end of January with the rescheduled Pantomime, Dick Whittington. A thoroughly enjoyable production and all three performances played to near capacity audiences. Well done to the cast, director and crew who gave of their all.

Updates from the Parish Council

- We have secured funding from County Councillor Matthew Hicks and District Councillor Suzie Morley to upgrade the remaining streetlights to more modern LED Units. We hope that the works will take place in the new financial year, once Suffolk have agreed a new streetlighting contract.
- You may have noticed that the Village Sign has been taken down as it is badly in need of refurbishment. We hope this will be completed before the Coronation in May. Work is also underway on a new pole for the Beacon.



- With the Support of County Councillor Matthew Hicks, Suffolk Highways undertook a Speed, Volume and Classification survey between Saturday 12 November 2022 and Friday 18 November 2022. The survey device was attached to a telegraph pole adjacent to the Eastbound carriageway of the A1120 between Blacksmith's Lane and Earl Stonham Village Hall. The device recorded traffic data separately for Eastbound and Westbound travel directions. The key findings were
 - There were a total of 25,554 vehicle movements along the A1120 during the 7 days, equating to a daily average of 3,650 vehicles. Larger vehicles accounted for 9% of vehicle movements during this period.
 - The impact of the A14 night closure can clearly be seen with increased traffic flow travelling Westbound. While this may be relatively short term, this does happen regularly, whether through a planned closure or an incident. The point to note is the number of large vehicles which ignored the diversion signage stating that the A1120 was not a suitable diversion route for HGVs.
 - We know that speed is an issue through the 30mph limits in Earl Stonham.
 - Residents along the National Speed limit sections of the A1120 regularly complain about the speed of vehicles and the volume of traffic. The Community Speed Watch team carry out regular monitoring and report on the numbers of vehicles exceeding the 30mph speed limit.
 - The survey showed that only 45% of the total number of drivers observed the 30mph speed limit. A further 38% were recorded as travelling between 30 to 34 mph. 17% of drivers exceeded 35mph, the level at which enforcement action would be taken.
 - The data shows that a greater number of vehicles travelling Westbound (from the A140) are exceeding 35mph than those travelling in the other direction.
- Following on from the survey:
 - We wrote to the Police and Crime Commissioner requesting further action on speeding. His office replied that concerns about speeding are taken very seriously, with casualty reduction the priority. We have 2 enforcement sites in the village (Village Hall and Village Green) and these are categorised as green sites and are scheduled to be visited a minimum of once every 6 weeks for

enforcement. In 2022, the Safety Camera Team detected a total of 321 offences.

- County Councillor Matthew Hicks set up a meeting with a Highways Officer to discuss our concerns about speeding and HGV traffic. In short, work is ongoing in this regard but is focusing on
 - Reviewing existing roundel locations and the 30mph repeater signs and condition of them, white lining (Dragons' Teeth) at the entry point to the East (to replicate those at West entry point).
 - HGV traffic – identifying any companies regularly using the A1120 and establishing their destination although the A1120 is a designated HGV Route.
 - Identifying potential budget or funding streams to fund any works identified.

The Community Speed Watch Team continues to operate, albeit at a reduced frequency during the winter months due to the shorter days and inclement weather. In the most recent session, the volunteers recorded 20 vehicles exceeding the speed limit, with one vehicle travelling at 54 mph, the highest speed recorded so far. As the days lengthen and weather improves, the team will be able to operate more frequently,

Tony Turner has continued to lead work, ably assisted by Brian Heard and other volunteers, at the Jubilee Garden and the Bowls Club. The Metal Tree Sculpture has been erected in the Jubilee Garden and several trees and hedging plants, donated by the Mid Suffolk Biodiversity Officer, have been planted in the garden and around the Bowls Club.

Finally, you will be aware that the Coronation of His Majesty, King Charles III will take place on **Saturday 6 May**, with a **Coronation Supper Evening** on **Friday 5 May** and **Bring & Share Lunch** on **Sunday 7 May**, both to be held at the Village Hall. **Monday 8 May** is set aside for volunteering.

Following on from the successful events to celebrate her Late Majesty, Queen Elizabeth II's Platinum Jubilee in June last year, Tony Turner will be pulling together a group of volunteers to organise our events to celebrate the Coronation. There are more details in this Recorder and keep a close look at the Village Email list too.

Mark Gillett
Chair - Earl Stonham Parish Council



Quiz Nights will be held in
Earl Stonham Village Hall at 7.30 on

13th March

10th April

22nd May



(please note change of date)

Everyone most welcome!
£3 per person with teams of up to 6 players.

Please support the bar which will be open
from 7pm.

STONHAM THEATRE GUILD
invite you to join!

THEATRE WORKSHOPS

COMMENCING 3 MARCH 2023
FRIDAYS 7 - 8PM

EARL STONHAM VILLAGE HALL

SINGING * DANCING
ACTING

- FREE TO MEMBERS
- £10 per year adults
£8 per year 12-17 yrs
£5 per year under 12 yrs
- Come & try with no obligation
to sign up for any
performances
- Further information:
Kathryn Burston
Email:
kathburston@hotmail.co.uk
Mobile: 07796 156038
(weekends).





As I write these words on a crisp January day, with the festivities seeming far behind, I'm aware the first anniversary of the invasion of Ukraine approaches, by the time you read these lines this sombre date will have just passed. Like many of you I have been reflecting on the impact this has had across our country and particularly here in Suffolk.

The tragic loss of life in Ukraine is deeply saddening and many people have been forced to flee their homes. The UK response to the crisis has been commendable, not least of all here in Suffolk where, as ever, I've been heartened by the response of our local communities.

I've seen first-hand, the compassion for Ukrainian refugees from residents across Suffolk and it is humbling to witness the way the Ukrainian families have settled into life here, with children attending schools and parents finding work. How difficult attempting a normal life in a foreign country must be, whilst worrying about loved ones forced to stay behind.

As a regular visitor to our local schools, during a recent visit I was delighted to meet with a young Ukrainian student who my parliamentary team and I assisted in settling here. The student is now thriving within the school, and I was impressed to learn how easily they had settled into school and Suffolk life, supported by staff and fellow pupils.

Perhaps the biggest impact the conflict has had for many in the UK and around the world is on the cost of living. We still find ourselves in the midst of a challenging winter as we count the cost of Putin's energy war. However, despite this, we welcome the news that in recent weeks, gas prices have thankfully stabilised and started to fall. This will help in reducing the impact of the war on the UK's inflation and cost of living for everyone.

In addition to the impact on energy supplies and prices, Putin also appears to be weaponising food supplies. Both Russia and Ukraine are among the biggest exporters of fertiliser and a further consequence of the conflict has been a reduction in supplies of fertiliser to the UK. This has increased the cost of growing food and resulting in increased prices in the shops.

We all remain concerned about what the future holds for Ukraine and hope for a resolution soon, in the meantime our continued support for the UK Government's position in standing shoulder to shoulder with Ukraine is right. I shall do everything I can to ensure the needs of Suffolk's residents and businesses are heard in Westminster during these challenging times.

As ever, further information is available at www.drdanielpoulter.com



***Fancy Dress
Costume Hire***

***Church Farm
Earl Stonham***

www.masqueradeshop.co.uk

Open Tuesdays to Fridays 10am-2pm

Saturday 10am-3pm

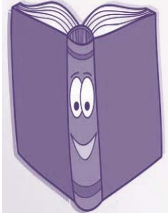
All other times by appointment

Telephone: 01449 711109

Email: sallymasquerade@gmail.com

~ VILLAGE INFORMATION ~

THE RECORDER



The Recorder is published every quarter. Don't forget you can advertise in the Recorder which is delivered to every house in the village. The cost for a full page is £30.00 (payable in advance), which is four adverts for the price of three and the money helps towards the cost of producing the Recorder. The advert will be included in four issues, with the option of it appearing on the website via **webmaster@earlstonham.org.uk**

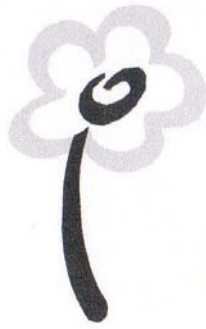
Please give the advert to Margaret Anthony (711779) or Deb Turner (711461). There is an e-mail address (Recorder@btinternet.com) so if you would like to send your contributions or advertisements electronically, it helps reduce preparation time of the Recorder. Payment can be made direct to Earl Stonham Parish Council – we will send you an invoice with details.

MOBILE LIBRARY & COFFEE & CAKE FRIDAYS



Do look out on the Village Email list and website for future developments on the Mobile Library, Coffee & Cake & much more. Coffee & Cake will be held on **3 Mar, 31 Mar, 28 Apr & 26 May** at the Village Hall starting at 10.30am until 12 noon. The Mobile Library Van will be there on **17 Mar, 14 April, 12 May & 9 June** at 12.20pm

If you would like to join the Village Email list, just send an email to Recorder@btinternet.com. It is a great way of keeping up to date with activities etc in our village.



PERFECT

PERENNIALS

Year 19 is just around the corner !!

Official opening:
Good Friday
April 7th

After a much needed break away in January things on the nursery are really moving forwards. This winter has certainly seen some stark variations with clear, sunny skies during the day and freezing temperatures at night. Potting of the bare-root plants is going well so far with over 3000 plants potted
If the weather is kind in March I may open the gates on April 1st.

Our compost sold very well last year and is available now.
Collection and/or free delivery (in the village) can be arranged before April.

Westland Multi Purpose 50L: **£4.40** Westland Peat Free 50L: **£5.50**
Westland Multi Purpose with John Innes 50L: **£5.50.** Growbags: **£3.30**

We have some new varieties this year to hopefully tempt you,
including Agapanthus, Geranium, Geum, Grasses, Iris and Salvias.

Other plants that we will be selling this year include, amazing ***Aquilegias***, carefree ***Campanulas***, delightful ***Delphiniums***, everlasting ***Echinacea***, ground-covering ***Geraniums***, grand ***Grasses***, heavenly ***Heleniums***, irresistible ***Iris***es, lovely ***Lupins***, pretty ***Paeonies***, funky ***Phlox***, super ***Salvias*** and vertical ***Verbena***.

I am delighted to say I have 200 ***Geranium "Carol"*** plants in stock and again all the money raised from them will go to ***Cancer Research UK***. Just £5 each.

The van team will be busy this Spring. Below is a list of where we will be in 2023.

April 23th Wyken Vineyard (Nr Bury St Eds)
May 1st Sudbury Town Centre
May 1st Mendlesham Street Fair
.

May 7th Wootens of Wenhaston
May 14th Bungay Garden Market
May 20th Creake Abbey (N. Norfolk)
May 28th **and** 29th Helmingham Hall

Latest news on our Facebook page. Behind the scenes photos on Instagram.

Mon to Sat: 9 til 5 Sun/B Hols: 10 til 4 Closed Thursdays
www.perfectperennials.co.uk 01449 711320

EARL STONHAM VILLAGE HALL

SUPPER EVENINGS



2023

17 March

15 April



5 May (Coronation) **

Everyone welcome

Bar open from 7pm

Tickets to include food - £12

Booking essential - please email

Recorder@btinternet.com

or call Deb on 711461

** Places on 5 May will be limited – please book early to avoid disappointment ;-) **

EARL STONHAM VILLAGE HALL



3rd March
Coffee & Cake Friday
10:30 – 12 noon

17th March
Library Van 12.20



31st March
Coffee & Cake Friday
10:30 – 12 noon

14th April
Library Van 12.20



28th April
Coffee & Cake Friday
10:30 – 12 noon

12th May
Library Van 12.20



26th May
Coffee & Cake Friday
10:30 – 12 noon

9th June
Library Van 12.20



23rd June
Coffee & Cake Friday
10:30 – 12 noon

7th July
Library Van 12.20





Temporary changes with next phase of £7.8m redevelopment of Foxhall Recycling Centre

Users of Foxhall Recycling Centre near Ipswich are being advised of major works that will temporarily mean fewer parking spaces and reduced access as part of a £7.8 million redevelopment programme.

This phase of work is scheduled to last until the summer and will raise the site level to allow for the removal of steps when using containers for recycling, making it easier for users and improving access from Foxhall Road. The redeveloped Foxhall Recycling Centre will provide increased capacity for vehicles on site, reduced queuing, improved access from Foxhall Road, and greater capacity to meet future growth. It is the largest part of the construction work taking place and will temporarily limit the amount of space available for public use. During this time, cars and car-derived vans, plus those with small trailers, can continue to use the site as usual through the [online booking system](#). However, vans, vans with trailers, cars with large trailers and trade waste must use an alternative site. There will also be no collection bins for textiles, glass, or paper recycling at Foxhall during this time.

This phase also sees the recycling centre's charity Re-use Shop temporarily relocate to The Ancient House in Ipswich. The shop on site will open at the Ancient House on January 30. It is anticipated to move back to site in the spring. Once complete the redeveloped Foxhall site will be a state-of-the-art facility serving the people of Suffolk for many years to come. This is a big project and we are doing everything we can to minimise disruption to users, and while we are sorry for any inconvenience we must introduce these measures as a result of the work required. I would urge users to please be patient and to plan well in advance if they need to use this, or other, sites.

Fire service celebrates Government inspection outcome

Suffolk Fire and Rescue Service has been rated "Good" for its effectiveness and how well it manages staff by inspectors from His Majesty's Inspectorate of Constabulary and Fire & Rescue Services (HMICFRS). An independent inspection undertaken last spring saw inspectors conduct a comprehensive

review of SFRS from how it responds to emergencies to its equality, diversity, and inclusion policies. Colleagues from across SFRS were involved throughout the inspection process to give an accurate representation of the service. HMICFRS praised many aspects of Suffolk Fire and Rescue Service, with inspectors highlighting that “the service is good at identifying risk in the communities it serves” and “works well with others to reduce the number of fires.” The report adds that “SFRS is good for how it promotes the right values and culture. There is a positive working culture throughout the service.” Inspectors also commented that “a culture of continuous improvements is promoted throughout the service and staff are encouraged to learn and develop.”

I am delighted with the outcome of our latest inspection, which reflects our staff's loyalty, commitment, and tireless work to protect Suffolk's communities, as well as the incredible achievements made by all teams since our previous full inspection in 2019. There have been many improvements in this time, especially in our protection work with businesses and landlords which has seen us recruit additional staff and target the areas of highest risk, enabling Suffolk to remain a safe and healthy place to live. Progress has also been made behind the scenes to ensure that we have the right people in the right jobs. We want SFRS to continue to be a diverse employer of choice, where staff can receive support with their health and wellbeing and have the career development opportunities they deserve.

Whilst the inspection was mostly positive, it also identified areas where SFRS can improve, specifically in terms of its efficiency and how it can make the best use of staff across its prevention, protection, and response activity. The service was commended for “increasing staff numbers in important areas of work to improve performance”, but inspectors felt that improvements needed to be made in productivity and ways of working, including making better use of flexible contracts for firefighters. Our inspection report includes much to be proud of, and I am pleased that SFRS received commendation on its effectiveness and how well it manages staff. However, we do acknowledge that we could be more efficient at keeping people safe and secure, with work already undertaken to address this, including further investment in our Prevention team, which has resulted in a 60% increase in our home safety visits compared to 2020/21. We remain committed to making continuous improvements not just in our efficiency but in all areas of our work to enable us to maintain the highest standards of excellence and provide the best possible service to our county, regardless of whichever challenge may arise.

Cabinet backs consultation on devolution deal worth over half a billion pounds for Suffolk

On January 24th, Councillors agreed to progress to consultation on Suffolk's proposed devolution deal which would hand the county more powers and control of over half a billion pounds in investment. The decision was made at a meeting of Suffolk County Council's Cabinet.

This proposed deal represents a big opportunity for Suffolk. By improving local transport infrastructure, building more affordable homes, and developing skills and training provision in a way that meets the needs of the local economy and local people, we could create new opportunities and raise living standards for our communities. This is the start of a journey for Suffolk, and if agreed, this deal would mark a step change in our relationship with Government, placing us front and centre as a key partner and allowing us to ensure that Suffolk's voice is heard in the national conversation. In time, it would open the door to further negotiations and even greater self-determination.

I look forward to hearing residents' and businesses' views on this proposed landmark deal.

A public consultation will be undertaken in early summer 2023 which will give residents and businesses the opportunity to have their say on Suffolk's proposed devolution deal. To enact the deal, a resolution to change the County Council's governance to a Directly Elected Leader and Cabinet model will need to be taken to Council for consideration. If approved, the Directly Elected Leader's election will be held within six months of that decision.

Plans to boost funding for Citizens Advice to support people with Cost-of-Living challenges

SCC plans to increase its funding to Local Citizens Advice in Suffolk by £45,000, to support Suffolk Residents during the current Cost of Living challenges. The Council has set out in its 2023/24 budget proposals, that it plans to increase the amount of funding it provides to the Citizens Advice Bureau from £120,000 in the 2022/23 financial year, to £165,000 for the 2023/24 financial year. SCC's budget proposals will be voted on in February. The additional funding reflects the increased demand the service is seeing in light of the current cost of living pressures.

We recognise the additional pressures the Citizens Advice and other voluntary organisations are under as more people are seeking support with the rising cost of living. People look to Citizens Advice in times of need, to provide friendly, non-judgemental and impartial advice, to help them find a way forward. This is why we have set out additional support for the Citizens Advice at this crucial time. We will continue work with the Citizens Advice and others to support our residents in the current financial climate. Local Citizen Advice officers across Suffolk are supporting Suffolk residents who need support in applying to the Local Welfare Assistance Scheme. The scheme was relaunched in October 2022 with an online application form. Suffolk residents can visit www.suffolk.gov.uk/LWAS to find out whether they may be eligible for financial support through Suffolk's Local Welfare Assistance Scheme.

Citizens Advice provides free, confidential, independent and impartial advice on a wide range of topics. Find your local office at www.citizensadvice.org.uk

Matthew Hicks - County Councillor for the Thredling Division

Tel : 01728 628176 Mob : 07824474741

E-mail: matthew.hicks@suffolk.gov.uk



ELECTRIC VEHICLE CHARGING STATION

As part of the 'Greenest County' scheme by Suffolk County, grants were made available for the installation of electric vehicle chargers. Earl Stonham applied for one of these and a charger has now been installed at the Village Hall.

This is located at the far corner of the car park adjacent to the old Bowls Club entrance and is a 2 socket, 7kw charger and costs **45p per kw** with any profit going to the village hall. It is available for anyone to use and can be used with a normal contactless credit/debit card or via a smartphone app.

Tony Turner

The
Electoral
Commission



REMEMBER TO

1- Register to vote

2- Check my
photo ID

3- Vote at a
polling station!



No ID? You can apply for free voter ID

Find out more at

electoralcommission.org.uk/voterID

or call 0800 328 0280



Exercise Therapy Studio

Take Control of your Body



Exercise Therapy Studio - Fitness and Wellbeing classes with a difference.

Zoe and Theresa have over fifteen years of experience in helping people to improve their fitness and specialise in supporting clients with health issues such as musculoskeletal conditions such as back, shoulder and knee complaints. Heart conditions, Cancer and more.

Fit & Tone Classes: from £6.50

This class is low impact with toning exercises for a total body workout using small equipment. The classes are led by Theresa who will guide you through correct form and technique.

We change that class every week so you won't get bored, and we will keep you smiling and motivated.

We are experienced in dealing with injury and rehab, so we can give variations on exercises if required. Classes are suitable for all fitness levels and all ages. From ages 16 to 70+

Our classes are small with only 8 in each class so we can give good quality instruction.

Pilates: Classes from £7.50

This is a beginner / intermediate mat Pilates class. This class will improve strength, function, and flexibility. Pilates helps to improve posture and reduce tension on joints. We use small equipment such as bands, balls and rollers and the routine changes each week to keep the classes varied and fun, we will keep you smiling and motivated. If you have not tried Pilates before, or if you have any specific health conditions we would recommend a one-to-one session with Zoe before joining a class. Suitable for all fitness levels and ages.

For more information on our classes, workshops and rehab sessions go to www.exercisetherapyonline.com or contact Zoe on 07931546858, you can also email us at exercisetherapyonline@gmail.com

*Exercise Therapy Studio, The Fitness Suite, The Highwayman, Norwich Road (A140),
Creeping St. Mary, Ipswich IP6 8PD*

**EARL STONHAM
VILLAGE FOOTPATH WALK
Saturday 22 April 2023**



It will be the **Gold Route** this time finishing at the Village Hall for refreshments. Join us at the Village Hall for a 2.00pm departure. The walk will be led by
Tony Stevens

Dogs on leads are welcome



Orchard Garage DMS Ltd was previously run from Church Road, Stowupland. We moved to Middlewood Green as a Limited Company in 2018. We have over 20 years of technical experience. Our goal is to deliver outstanding customer service to repair, service and MOT all makes and models to the highest possible standard at very competitive prices. We also can supply and fit tyres at very competitive price.

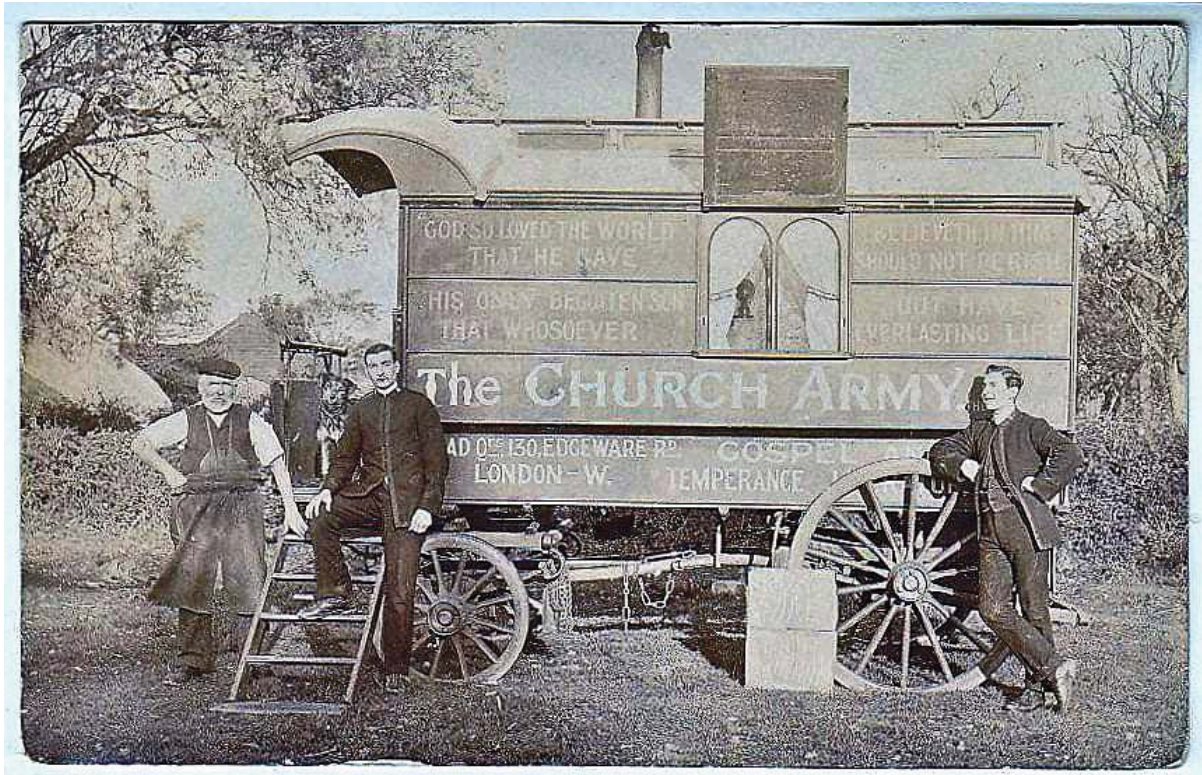
We look forward to welcoming you to Orchard Garage, please ring for a quotation or to book an appointment.

Telephone – 01449 711436

Email – Orchardgaragedms@outlook.com

**Address – Orchard Garage DMS Ltd, White House Farm,
Middlewood Green, Stowmarket, Suffolk, IP14 5HE**

FROM YOUR LOCAL RECORDER
John Jones



This photo, which appeared recently on social media, dates from around 1912 and shows one of the many caravans sent out on tour by The Church Army, which was founded in 1882. The location is said to be Earl Stonham, although there are few clues in the picture to suggest exactly where it might be. The man wearing an apron appears to be a tradesman of some sort, perhaps a blacksmith or a carpenter: can anyone identify him?

Domestic and commercial Upholstery
Curtains, Roman blinds & Soft furnishings



AMUSF Trained Upholsterers

- Traditional & Modern Upholstery methods
 - Cushions
 - Footstools
 - Headboards
- Deep buttoning Chesterfield style
 - Dining Chairs
 - Leather refurbishment

Stonham Interiors
Unit 4c Station Road Ind Est
Elmswell
Suffolk
IP30 9HR

Mobile: 07791 789899
Email: lee@stonhaminteriors.co.uk



EARL STONHAM PLANNING APPLICATIONS

The following have been submitted for consideration by the Parish Council

- **Application under S73 for removal or variation of a Condition following grant of Planning Permission 1082/94 dated 20.05.1999. (Retention of change of use of building from domestic storage/workshop to residential and office accommodation. Town & Country Planning Act 1990 – To remove Condition 2 (Removal of Permitted Development Rights) – In order to allow permitted development rights to current owner imposed under original planning permission condition – Lingwood Barn, Angel Hill, Earl Stonham IP14 5DP : Application DC/23/00297.**
- **Application for Outline Planning Permission (Access Points to be considered, Appearance, Layout, Landscaping and Scale to be reserved) Town & Country Planning Act 1990 (as amended) – Erection of 4 No. Dwellings and new vehicular access – Land North of Stowmarket Road, Earl Stonham, Suffolk : Application DC/23/00362**
- **Householder Application – Erection of Single Storey Linked Extension – Granary Cottage, Upper Langdales Farmhouse, Mill Lane, Earl Stonham IP6 8QF : Application DC/23/00377**

If you wish to comment on any planning application, please contact MSDC Planning Department or go to : <https://planning.baberghmidsuffolk.gov.uk/online-applications/>

Please remember, if you wish to comment online, you MUST register on the website AND log in to ensure your comments are noted

If you send a comment to the Planning Department, please ensure you also copy it to our Parish Clerk at parishclerk@earlstonham.org.uk



David Cook

Drainage and Ancillary Works



SPECIALIST IN:

- Ditch maintenance and improvement.*
- Land drainage and outfall repairs.*
- Culvert construction and pipe replacement.*
- New pond construction*
- Existing ponds restored*
- Hedge coppicing with excavator shear.*
- Excavator flailing.*
- Land and site vegetation clearance.*
- All other excavation work.*
- Any size excavators from 2.5 ton mini up to 30 ton long reach*

CONTACT:

Tel: 07771 665720
email: dcookdrainage@gmail.com
www.ditchmaintenancesuffolk.co.uk

CP CONSTRUCTION PLANT

CS COMPETENCE SCHEME

REGISTERED OPERATOR NO: 01380113/2
01380113/2



*Please continue to bring your empty bottles, textiles, newspaper & card **(but not cardboard)** to the village recycling banks as this helps to raise funds for the village.*



rawpixel

Thank you!



Zoë Hyde Podiatry

BSc (Hons), Pod., M.ch.S., H.C.P.C. Reg

Professionally qualified, experienced and caring podiatry service in the comfort of your own home.

I cover the Stowmarket area and surrounding villages.

Range of treatments include:

Nail Care, Corns and Callus, Verrucae, Diabetic Assessment.

**To book YOUR appointment now,
call: 07925826655**

zoe.hyde.uk@gmail.com

www.zoehydepodiatry.com

EARL STONHAM VILLAGE HALL



As the days get longer, at the hall we are looking forward to how the new Jubilee Garden develops this year. We have planted the new hornbeam hedge and fruit trees supplied by Mid Suffolk Council and in March will aim to get part of the original Bowls green area planted with wildflower seeds. Remember, the

garden is for everyone to use.

It was good to see the audience numbers back to pre-covid levels this year for the Stonham Theatre Group pantomime of Dick Whittington. The postponement to January due to cast illness was unfortunate but did not detract from the fun and enjoyment.

The STG are also planning on providing entertainment for the Coronation celebrations and will be holding a series of workshops on theatre themes over the next couple of months. If you are interested in taking part in these workshops, or indeed would like to perform, you will see an advert elsewhere in the Recorder with details.

That brings us neatly onto the plans for celebrating the Coronation in May. An organising committee has been formed for this and we are planning two separate village events. On the Friday evening before the Coronation (**5 May**) there will be a special Supper Evening at the hall with the STG providing entertainment. Numbers for this will be limited (the cooks can only cater for so many....) so please book early!

The second event will be similar to the Bring & Share lunch that was held last year for the Jubilee which will be on the Sunday following the Coronation (**7 May**) and will be on the recreation ground if the weather is suitable or in the hall if not. Everyone is invited and all we ask is that you bring something to add to the lunch buffet table. More details will be published nearer the time but if you have any

suggestions for either event or would like to help in any way, please get in touch.

As part of the Warm Spaces initiative, we restarted simple Library Lunches at the hall to coincide with the visit of the Library Van. Prior to covid, these regularly attracted anything up to 30 people but since restarting, numbers have been very much lower and in February we only had one attendee! With such small numbers, it is clear that Library Lunches are not fulfilling a need anymore and therefore it has been decided not to continue with them.

Tony Turner
Chairman
Earl Stonham Village Hall Management Committee
07710 018743



PLACES AVAILABLE
from September



Where learning is FUN
For Children aged 2-5 years

We offer play-based provision in our purpose built premises. We have an outdoor area where we spend large parts of the day, with a big sandpit, slide, playhouse and a mud kitchen for messy play.

We work in partnership with parents to plan individually for each child, maintaining detailed notes and photographs which we use to identify how to support each child in meeting their full potential. We tailor the setting to meet the needs of each family.

We use Tapestry for the childrens' online learning journal, which both ourselves and our parents can upload information to. This can be continued in reception class at Stonham Aspal Primary school.



Places available from September

Please contact Julie Ponton on **07977 641381** or email: **stonham-aspal@btconnect.com** for further information

www.stonhamaspalpreschool.org.uk

THE STREET, STONHAM ASPAL, IP14 6AF



Registered Charity no. 1114259

WOULD YOU LIKE TO HIRE THE VILLAGE HALL?

There is a large hall with dance floor & stage. Ideal for barn dances, parties, discos or drama productions. Tables & chairs can be set up for dining or for Quizzes or Bingo evenings & there is a club room where smaller groups can gather.

Also a well-equipped kitchen with two cookers, a fridge-freezer, heated trolley, sinks and extensive working area. The hall opens out onto the adjoining recreation ground with a multicourt and small children's playground. Perfect for picnics & a small bouncy castle can be erected for children's parties

Charges for the hire of the Village Hall PER HOUR from April 2021:

For Earl Stonham Residents		For Non-Residents	
Clubroom	£ 8.00ph	Clubroom	£ 9.00ph
Hall	£10.00ph	Hall	£12.00ph
Hall & Club Room	£16.00ph	Hall & Club Room	£19.00ph
Over 6 Hours (All Areas)	£105.00	Over 6 Hours (All Areas)	£125.00
Over 6 Hours (Club Room)	£50.00	Over 6 Hours (Club Room)	£ 55.00

Please contact Deb Turner (711461) to book the hall



J. FELTON

CHIMNEY SWEEP



PLEASE CALL 01986 799175

CLEAN & FRIENDLY SERVICE

FULLY INSURED

SMOKE TESTS

INSURANCE CERTIFICATES

CCTV INSPECTIONS

COMPETITIVE RATES

REGISTERED MEMBER OF THE INSTITUTE OF CHIMNEY SWEEPS





SUPPORT IN PRAYER IN TROUBLING TIMES

Once a month Christians in the village, who attend different churches, meet together to pray for issues affecting the parishes of Earl Stonham and Stonham Parva (including issues arising out of national and international affairs) and for individuals who would like prayer for a particular need.

With hearts saddened by the impact of the earthquake in Turkey/Syria, the on-going conflict in Ukraine and other areas, the impact of the cost of living crisis here at home, we are thankful to be able to turn to Jesus in prayer, including seeking guidance on the best ways to be of help.

Meetings will normally be held at 2.30pm on the third Monday of the month in the Parish Room, although the meeting in March will be on Monday 27th. To confirm the date and venue if you would like to join us, or if you would like to request prayer for an issue or individual, please contact Maggie Podd (07939 912080), Philip Payne (Rector 01449 711684) or Helen Norris (Assistant Priest 01449 761867).



Providing Personal Care in your own home

My Care at Home is a small family run business covering Suffolk and based in Stowmarket. Our commitment is to provide 'high quality care', which we deliver through our greatest asset, our staff and the training that they receive. We only employ people who love to care.

We provide the following Services:

Personal Care and companionship
Respite Care
Dementia Care
Help around the house

Your care package could be a one off arrangement, ad-hoc or on a regular basis.

If you receive care through Social Services, you can request for a personal budget so you can chose your own care provision. Please call us for more information.

Request a Brochure or book an appointment on 01449 763086

Find us on Facebook or visit our website www.mycare-at-home.co.uk

We are also recruiting NOW - We need exceptional people who love to care

117 Ipswich Street, Stowmarket, Suffolk IP14 1BB

EARL STONHAM WI



So, the bad news is that you missed Alan who was our speaker in January and who gave such an entertaining talk on what it was like to be the chef at Chequers during the premierships of Margaret Thatcher, John Major, Tony Blair and Gordon Brown.

Sadly, you also missed David who made a return visit to talk on the subject of very gory murders in Victorian London. However, you could join us in time to listen to a travel talk on Hidden Bhutan. We are currently looking ahead to the warmer weather [and yes it's on its way] and planning our summer outing.

Going on through the year we have speakers on such diverse subjects as soap in the bathroom, personal colour palettes and a timely talk on scams and frauds from a representative of the National Westminster Bank. We are happy to throw any of these talks open to visitors for a very small fee indeed!

Regular afternoon Mahjong sessions are held in the village hall on the fourth Thursday of the month 2pm – 4.30pm. You don't need to be a WI member to take part and you are very welcome to come along even if you've never played mahjong before. There is a small charge of £3 to cover the cost of hiring the hall but tea and coffee are provided.

We would be delighted to see you in the clubroom in the village hall on the **THIRD TUESDAY** of each month at 7.30pm. For more details please contact Christine Double on 07775 507083 or Lindsey Stone on 711602

WI Programme 2023

Mar 21 st	'Hidden Bhutan'
Apr 18 th	'Behind the Bathroom Door'
May 16 th	RESOLUTION MEETING & Social evening
Jun 20 th	'Elizabeth 1'
Aug 15 th	'Nothing like a dame'
Sept 19 th	'Colour You Beautiful'
Oct 17 th	ANNUAL MEETING & Social evening
Nov 21 st	'Scams & Frauds' by ZOOM
Dec TBC	Christmas Meal



JD Tree Services

& COUNTRYSIDE MANAGEMENT

- Tree removal, felling or reduction
- Site clearance
- Stump grinding
- Waste removal
- Hedge cutting
- Chipping
- Firewood

Professionally trained, fully insured,
friendly service
Call today for a free no obligation quote



mobile: 07736 311782
email: info@jdtrees.co.uk
web: jdtrees.co.uk

EARL STONHAM TRUST REPORT



With Spring approaching, the Village Hall Committee hope to be in a position to proceed with planting the wildflower meadow on part of the former Bowling Green, giving it a new purpose.

The green was constructed manually, by volunteers, in 1934 and was in use until the unfortunate demise of the club in 2019. It is sad the 80-year history of bowling has ceased, but the Trust appreciates the VH plans for using the buildings, and extending the car park, will ensure the area will continue to be of beneficial use for parishioners.

The play equipment is the responsibility of the Trust and is inspected weekly by volunteers and annually by a professional but in the meantime, if anyone has any concerns, do contact one of the trustees mentioned below.

Residents are also reminded grants can be considered for financial need and educational and training purposes for any resident of Earl Stonham. In these particularly uncertain times if you, or if you are aware of another who could benefit, contact a Trustee or download an application form from the Village website www.earlstonham.org.uk. Alternatively, write to Jennie Griffiths at Cornfields, Wicks Lane, IP14 5HL or jfrgriffiths@yahoo.co.uk. All enquiries are dealt with confidentially and the Trust meets next on **Thursday 16th March**.

Karl Wilkinson (711320)
Phil Hurt (711879)
Jennie Griffiths (711794)
Frankie Wicks (711222)
Sharon Budd (711243)
Mark Gillett (07984 518959)
Tony Turner (711461)

KH

Kevin Hollings
KITCHEN STUDIO



Unit 14 Lodge Works, Stowmarket Road,
Old Newton, IP14 4EE

01449 257160 www.kevinhollings.com

info@kevinhollingskitchens.co.uk

EARL STONHAM OVER 60'S

(The Golden Circle)

For our last meeting in December 2022 we celebrated Christmas in the Village Hall with a lunch-time meal cooked and served by Jenny Johnson Catering. Members were able to choose from a varied menu of three courses. At the lunch members received copies of our programme for 2023 which has had to be amended. 'Flight from Iran' will now be on 5th April, while the talk on Glass Engraving will take place on the 3rd May.

In January 2022 Pip Wright's talk 'Lucky is the name' had to be cancelled due to Covid. Happily this January Pip was able to pay us a visit and treated us to the true story of a Suffolk farmer called Lucky Burrows and his family between the years 1858 to 1969.

In February our speaker was Beverly Rodillard who described in moving detail, the life of her mother who lived in Guernsey during WW2 when the island was occupied by the Germans.

In March we meet up in St Mary's Church, Earl Stonham, for a talk and look around led by Mr Roy Tricker.

If you would like to become a member, come to any of the remaining talks or join us on a day out, please ring Joan on 711294. The meetings are still being in Earl Stonham village hall, all events take place on the first Wednesday of the month.

Earlier this year our member Mrs Wicks lost her husband David, we send our sympathy to Frankie and family at this sad time.

Vera Ivory



EARL STONHAM CRICKET CLUB



Well the last few days have certainly had a spring feel to them which has enabled me to do some early pre-season work on the ground. Outfield has been cut, as has the square and a sprinkle of fertiliser has been added to green things up a bit. Not sure I should say this, but the square could do with a little rain which is certainly something I don't normally wish for in February.

As we look to the season ahead, our first game is on April 15th, away to Colchester Cavaliers and that is only nine weeks away! We have three games in April this year which does feel like a pretty early start to the season. There is an ongoing debate around the length of the Saturday cricket leagues, with twelve teams in all divisions down to division seven, it means the season won't end until September 9th.

That doesn't give any free weekends all season and in our view it is something that needs addressing quickly to help smaller clubs with availability and reduce travel each season.

We have booked some indoor net session at Bury St Edmunds CC just prior to our season opener and they begin on Monday 27th March 7pm – 8.30pm for three consecutive weeks. Others may be added but for more information on nets or if you are interested in playing cricket this season on either a Saturday or Sunday, please contact Luke Edgar on 07794 599402.

Each year we look to either improve our facilities or equipment and this year is no exception. We have managed to track down a

replacement roller as ours was showing signs of age (aren't we all) as it did break down a couple of times last season. It's the perfect weight we were looking for and was only situated the other side of Bury. Still a significant investment for the club but very worthwhile.

Which brings me nicely on to our Vice Presidents and ball sponsors who's support each year is extremely appreciated by all at the club. Your support helps us make these kinds of improvements. New sponsors of course are always welcome.

So, roll on the summer and if you're passing by while a home game is on give us a look, the bar is always open on a match day.

ESCC Tribute

A couple of weeks ago, two of our former members sadly passed away. David Wicks, better known as Wicksy to us at the club, was a member of our 1996 Division 4 winning side, along with his son James. What made that win extra special to us all, was that we pipped our local rivals Stowupland to the title. David was a very competitive character, something I learnt in my formative years when I would play him at tennis at Moat Farm. There was no going easy on his young challenger, but it made me even more determined to try and beat him which I did, but only on a couple of occasions. He was always keen to hit cricket balls as hard as he hit tennis balls.

David & Frankie joined us on a tour to Staffordshire in the late 90's and in our first game against Elford CC, David and I opened the innings. We got off to a reasonable start but when I played a shot down to wide long on, I called David through for a run which he duly obliged. However, despite it going to the fielder deep on the boundary, David was somewhat reluctant to come back for a second run. Probably because he fancied hitting the slow bowler I had just hit, but I did push him for the second. I was running to the danger end, so I assumed all would be fine. What I hadn't factored for was that the fielder had a rocket arm and he threw the ball like an arrow

to David's end and it clattered into the stumps. David was run out by a good six feet. After a couple of expletives, which I assumed were aimed at me, he trudged off the pitch. I can still remember the sound of his bat bouncing off the walls of the changing room!

He continued to support the club even when he finished playing by turning out for our annual Presidents XI v Chairmans XI game and he kindly donated the takings from his restaurant one evening to assist with the clubs fundraising for the new pavilion.

Colin Edgar (my dad) was a keen cricketer in his day, playing for his home village side Abbots Bromley in Staffordshire, before playing for Stonham when he moved into the village in 1959 following his marriage to Christine. He was very proud to win the batting average one year at Abbots Bromley especially as he was a slow bowler who batted eleven. This feat was achieved by numerous low scores of not out which bumped his average up enough to win it that year, much to the frustration of their top order batters.

He is the only player to have played in both eras of the club as he made a comeback to cricket following the reformation of the club in 1989. He took on the running of the club in the early 60's and when the team was short, he would get a few kids in from the school where he taught in Ipswich to make up the numbers. He told me many stories of the early days which I loved listening to and thankfully he kept all the old club records which I now have, which include all the old meeting minutes. He even kept hold of the invite cards that got posted out to players to say you had been selected to play at the weekend.

He and Christine have been big supporters of the club, attending the majority of home games over the years and they have particularly enjoyed seeing their grandson Luke score a ton or two at home. They always attended the annual awards dinner and have been VP's of the club for many years.

Both these former members will be sadly missed by their families and friends and all at ESCC but we will all have fond memories of them both to cherish.

Simon Edgar
Hon Club Secretary
07974132468
Simonedgar11@sky.com





ST MARY'S CHURCH

EARL STONHAM with STONHAM PARVA

www.earlstonham.org.uk and click on Communities
& www.achurchnearyou.com/church/2011/

These notes in The Recorder give an outline of our church services and activities here in Earl Stonham but we are part of a group of 8 parishes all doing things.

Services are in different styles and at different times across our patch. They can easily be found if you email lizandjohnnince@gmail.com and ask for the Weekly Notice Sheet. It will pop into your emails and you can easily stop it if you wish.


Meanwhile here are some important dates for the next few weeks:

Ash Wednesday – 22 February

The beginning of Lent

10.30am Holy Communion (in our Parish Room)

7.00pm Reflective service at Crowfield

 Claydon and North Bosmere Benefices

Lent Course

Good News
for
God's World

We live in an amazing world. But the planet, its inhabitants and the natural world are suffering. What does it mean to be the People of God, here and now, in this time of multiple crises? How can we be good news for God's World?

Thursdays from 23 February, 2pm in Stonham Aspal
Fridays from 24 February, 2pm in Claydon
Tuesdays from 28 February, 7:30pm on Zoom
Wednesdays from 1 March, 1.45pm in Henley
Wednesdays from 1 March, 7:30pm in Barham
Fridays from 3 March, 12 noon on Zoom

Book a place on one of the above by emailing reader.ruthdennigan@gmail.com

What will you do this Lent?

World Day of Prayer – Friday 3 March

10.00am in Earl Stonham Church

Mothering Sunday - 19 March

11.00am Service in Earl Stonham Church with posies of flowers

Palm Sunday - 2 April

11.00am Palm Sunday Holy Communion at Earl Stonham

Maundy Thursday - 6 April

7.00pm Holy Communion at Creeting St Peter

Good Friday - 7 April

12noon Walk from Creeting St Mary to Earl Stonham down the lane +
picnic lunch

2.00pm Devotional Service

Easter Day - 9 April

6.00am First Light Service at Earl Stonham

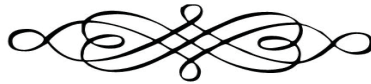
The Parish Room

Available to hire for meetings, rehearsals, parties with parking just outside. £6/hour, please contact Frankie Wicks (711222)



Contacts for the Ministry Team

Rector	Rev Philip Payne revphilippayne@btinternet.com	01449 711684
Reader	Henry Stanford	01449 711742
Churchwardens	Jane Porch	01449 711809
	Mark Parry	01449 711816
Lay Elder	Jane Porch	01449 711809



DEATHS

29 January David Wicks
29 January Colin Edgar

VILLAGE INFORMATION PACK

An extremely useful information pack can be obtained by ringing Margaret Anthony on 711779 or downloaded from the website: www.earlstonham.org.uk

The **EARL STONHAM RECORDER** is published by the Parish Council. Anyone wishing to contribute may like to make a note of the following:-

	<i>Contributions to the editors by</i>	<i>Distribution by</i>
<i>SUMMER</i>	<i>Fri 12th May 2023</i>	<i>Mon 29th May 2023</i>
<i>AUTUMN</i>	<i>Fri 11th Aug 2023</i>	<i>Mon 28th Aug 2023</i>
<i>WINTER</i>	<i>Fri 3rd Nov 2023</i>	<i>Mon 20th Nov 2023</i>
<i>SPRING</i>	<i>Fri 16th Feb 2024</i>	<i>Mon 4th Mar 2024</i>

*Editors - Margaret Anthony
Middlewood House, Blacksmiths Lane - 711779
Deb Turner - 711461*

Distribution - Sally Baker - 711320

CONTRIBUTIONS FOR THE NEXT EDITION

*By Fri 12 May 2023 to Margaret Anthony
Middlewood House
Blacksmiths Lane - 711779
or by email to Deb Turner at Recorder@btinternet.com*

**Contributions for the website can be forwarded to
webeditor@earlstonham.org.uk**

RECYCLING BINS - TELEPHONE NUMBERS



If you see that the Recycling Bins at the Village Hall are nearly full, please call the following numbers:



Glass
Indigo Waste Management
01842 820804



Textiles/Clothing
0800 090 2321



Newspapers/Card
0300 1234 000

Service No:

110 112 113 114



Diss → Eye → Ipswich

Monday - Friday

110 via Mellis 112 via Stuston

(No Service on Public or Bank Holidays)

113 via Mendlesham and Claydon 114 via Debenham and Claydon

Service	112	112	112	112	112	112	110	112	112	112	112
			Sch	NSch							
Diss, Bus Station Park Road	0607	0650	0735	0735	1000	1125	1330	1715	1755
Diss, Victoria Road/Vinces Lane Bus Shelter	0610	0653	0738	0738	1003	1128	1333	1718	1758
Palgrave, opp. Church	1335
Wortham, opp. Mellis Road Bus Shelter	1338
Mellis, Railway Tavern P.H.	1342
Yaxley, Cherry Tree P.H.	1345
Stuston, Stuston Road, Roundabout	0612	0655	0740	0740	1005	1130	1720	1800
Brome, B1077, Oaksmere Entrance	0615	0658	0743	0743	1008	1133	1723	1803
Eye, Lambseth Street, opp. Town Hall	0620	0703	0748	0748	1013	1138	1349	1728	1808
Guaranteed connection to 113/114 with no need to change buses											
Service	114	113	114	114	113	114	113	114	114	113	114
			Sch	NSch							
Eye, Lambseth Street, opp. Town Hall	0620	0703	0748	0748	1013	1138	1349	1413	1528	1728	1808
Occold, The Street, School	0625	0708	0753	0753	1018	1143	1354	1418	1533	1733	1813
Thorndon, B1077, The Wash	0630	0713	0758	0758	1023	1148	1359	1423	1538	1738	1818
Thorndon, Black Horse P.H.	0632	0715	0800	0800	1025	1150	1401	R	1540	1740	1820
Stoke Ash, A140, opp White Horse PH	...	0720	1030	...	1406	1745	1825
Thwalte, A140, Bucks Head PH	...	0724	1034	...	1410	1749	...
Brockford Street, A140, Wetheringsett Turn Bus Shelter	...	0726	1036	...	1412	1751	...
Mendlesham, opp. Kings Head P.H.	...	0729	1039	...	1415	1754	...
Mendlesham Green, Green Man Corner	...	0733	1043	...	1419	1758	...
Forward Green, Blacksmiths La, Weylands Farm	...	0736	1046	...	1422	1801	...
Rishangles, B1077, Baptist Church	0637	...	0805	0805	...	1155	...	1425	1545
Bedingfield, The Street, The Pump (School days Only)	0810
Aspall, B1077, opp Valley Cottage	0641	...	0816	0809	...	1159	...	1429	1549
Debenham, High Street, Bus Shelter	0645	...	0820	0813	...	1203	...	1433	1553
Debenham, Leisure Centre	0647	...	0822	0815	...	1205	...	1435	1555
Mickfield, Debenham Road, Crossroads	0652	...	0827	0820	...	1210	...	1440
Pettaugh, Bus Shelter	1603	...
Stonham Aspall, Stowmarket Road, Pound Corner	0655	...	0830	0823	...	1213	...	1443	1607
Little Stonham, A1120, opp Brewery Farm	0702	0741	0837	0830	1051	1220	1427	1450	1614	1806	...
Barham, Norwich Road, opp Sorrel Horse PH	0710	0749	0845	0838	1059	1228	1435	1458	1622	1814	...
Claydon, Edinburgh Gardens	1101	1230	1437	...	1624
Claydon, High School (School days)	1500
Claydon, The Crown P.H.	0713	0752	0848	0841	1103	1232	1439	1506	1626	1817	...
Bramford, Papermill Lane op Whitton Layer	1512
Chantry, Suffolk One	0905C
Ipswich, Whitehouse, Goddard Road, Asda	0717R	0756R	...	0845R	1107R	1236R	1443R	...	1631R	1821R	...
Westbourne, opp. Norbridge Social Club	0720	0759	...	0848	1110	1239	1447	...	1634	1824	...
Ipswich, High Street, Westgate Street	0726	0805	...	0854	1116	1245	1453	1522	1640	1830	...
Ipswich, Old Cattle Market Bus Station Stand M	0915	0856	1118	1247	1455	1524	1642	1832	...
Ipswich, Rail Station Forecourt	0731	0810

Code: C - Only serving when Suffolk One is open (drop off only) R - Setting down by request only Sch - Operates when SCC schools are open
 NSch - Operates when SCC schools are closed

Service No:

110 112 113 114



Ipswich → Eye → Diss

Monday - Friday

110 via Mellis 112 via Stuston

(No Service on Public or Bank Holidays)

113 via Claydon and Mendlesham 114 via Claydon and Debenham

Service:	113	114	114	113	114	113	114	114	114	114	113	114
	Sch	NSch							NSch	Sch		
Chantry, Suffolk One	1600C
Ipswich, Station Bridge	1610
Ipswich, Rail Station Forecourt	1705	1840
Ipswich, Old Cattle Market Bus Station Stand M	...	0745	0805	0935	1140	1305	1405	1515	1620	1620	1715	1845
Ipswich, Tower Ramparts Bus Station Stand FF	...	0748	0808	0938	1143	1308	1408	1518	1623	1623	1718	1848
Westbourne, Norbridge Social Club	0817	0947	1151	1316	1417	1527	1632	1632	1727	1857
Ipswich, Whitehouse, Goddard Road, Aida	0821	0951	1155	1320	1421	1531	1636	1636	1731	1901
Bramford, Papermill Lane op Whitton Layer	...	0800
Claydon, High School (School days)	...	0810
Claydon, Ipswich Road, The Greyhound P.H.	...	0815	0825	0955	1159	1324	1425	1535	1640	1640	1735	1905
Claydon, Edinburgh Gardens	1201	1326	1427	1537
Barham, Norwich Road, Sorrel Horse P.H.	...	0817	0827	0957	1203	1328	1429	1539	1642	1642	1737	1907
Little Stonham, Stowmarket Road, Valley Farm	1005	...	1335	1744	...
Forward Green, Blacksmiths Ln, opp Weylands Farm	1009	...	1339	1748	...
Mendlesham Green, Green Man Corner	1013	...	1343	1752	...
Mendlesham, Kings Head	1017	...	1347	1755	...
Brockford Street, A140, opp Wetheringsett Turn Bus Shelter	1020	...	1350	1758	...
Thwaiter, A140, opp Bucks Head PH	1022	...	1352	1800	...
Stoke Ash, A140, White Horse PH	1026	...	1356	1804	...
Little Stonham, Valley Farm	0835	...	1209	...	1435	1545	1648	1648	...	1913
Stonham Aspat, Stowmarket Road, Pound Corner	0838	...	1217	...	1438	1548	1651	1651	...	1916
Mickfield, Stonham Road, Crossroads	0842	...	1216	...	1442	1552	1655	1655	...	1920
Coddenham, Village Store	...	0825
Crowfield, Manor View	...	0830
Pettaugh, Post Office	...	0833
Winston Green, Debenham Road	...	0835
Debenham, High School / Leisure Centre	...	0846	0846	...	1220	...	1446	1600	1659	1659	...	1924
Debenham, High Street, opp Bus Shelter	...	0849	0849	...	1223	...	1449	1604	1702	1702	...	1927
Aspall, B1077, Valley Cottage	...	0852	0852	...	1226	...	1452	1607	1705	1705	...	1930
Bedingfield, The Street, The Pump (School days Only)	1610	...	R
Rishangles, B1077, opp Baptist Church	...	0856	0856	...	1230	...	1456	1616	1709	1709	...	1934
Thorndon, opp Black Horse P.H.	0700	0900	0900	1030	1234	1400	1500	1620	1715	1715	1808	R
Thorndon, B1077, The Wash	0702	0902	0902	1032	1236	1402	1502	1622	1715	1715	1810	1936
Occold, The Street, opp School	0705	0905	0905	1035	1239	1405	1505	1625	1718	1718	1813	1939
Eye, Lambeth Street, Town Hall Bus Shelter	0710	0910	0910	1040	1244	1410	1510	1630	1723	1723	1818	1944

Guaranteed connection to 113/114 with no need to change buses

Service:	112	112	112	110	112	112	112	112	112	112	112	112
	Sch	NSch							NSch	Sch		
Eye, Lambeth Street, Town Hall Bus Shelter	0710	0910	0910	1040	1244	1630	1723	1723	1818	1944
Yaxley, opp Cherry Tree P.H.	1043
Mellis, opp Railway Tavern P.H.	1046
Worham, Mellis Road Bus Shelter	1050
Palgrave, Church	1053
Brome, B1077, opp Oaksmeire Entrance	0713	0913	0913	...	1247	1633	1726	1726	1819	1947
Stuston, Stuston Road, Roundabout	0716	0916	0916	...	1250	1636	1729	1729	1822	1950
Diss, Victoria Road/ Rose Lane Bus Stop	0719	0919	0919	1055	1253	1639	1732	1732	1825	R
Diss, Bus Station Park Road	0722	0922	0922	1058	1256	1642	1735	1735	1828	R

Code: C - Only serving when Suffolk One is open R - Setting down by request only Sch - Operates when SCC schools are open

NSch - Operates when SCC schools are closed

Service No:

112 113 114**Simonds Countrylink****Diss → Eye → Ipswich****Saturday Only**

112 via Stuston

(No Service on Public or Bank Holidays)

113 via Mendlesham and Claydon 114 via Debenham and Claydon

Service:	112	112	112	112	112	112	112
Diss, Bus Station, Park Road	0650	0730	1030	1230	1430	...	1630
Diss, Victoria Road/Vinces Road Bus Shelter	0653	0733	1033	1233	1433	...	1633
Stuston, Stuston Road, Roundabout	0655	0735	1035	1235	1435	...	1635
Brome, B1077, Oaksmere Entrance	0658	0738	1038	1238	1438	...	1638
Eye, Lambseth Street, opp Town Hall	0703	0743	1043	1243	1443	...	1643

Guaranteed connection to 113/114 with no need to change buses

Service :	114	113	114	113	114	114	113
Eye, Lambseth Street, opp Town Hall	0703	0743	1043	1243	1443	--	1643
Occold, The Street, School	0708	0748	1048	1248	1448	--	1648
Thorndon, B1077, The Wash	0713	0753	1053	1253	1453	--	1653
Thorndon, Black Horse PH	0715	0755	1055	1255	1455	--	1655
Stoke Ash, A140, opp White Horse PH	...	0800	...	1300	...	--	1700
Thwaite, A140, Bucks Head PH	...	0804	...	1304	...	--	1704
Brockford Street, A140, Wetheringsett Turn Bus Shelter	...	0808	...	1308	...	--	1708
Mendlesham, Kings Head PH	...	0811	...	1311	...	--	1711
Mendlesham Green, Green Man Corner	...	0815	...	1315	...	--	1715
Forward Green, Blacksmiths La, Weylands Farm	...	0818	...	1318	...	--	1718
Rishangles, B1077, Baptist Church	0720	...	1100	...	1500	--	...
Aspall, B1077, opp Valley Cottage	0724	...	1104	...	1504	--	...
Debenham, High Street, Bus Shelter	0728	...	1108	...	1508	--	...
Debenham, Leisure Centre	0730	...	1110	...	1510	--	...
Mickfield, Debenham Road, Crossroads	0735	...	1115	...	1515	--	...
Stonham Aspall, Stowmarket Road, Pound Corner	0738	...	1118	...	1518	--	...
Little Stonham, A1120, opp Brewery Farm	0745	0823	1125	1323	1525	--	1723
Barham, Norwich Road, opp Sorrel Horse PH	0753	0831	1133	1331	1533	--	1731
Claydon, Edinburgh Gardens	0755	0833	1135	1333	1535	1633	1733
Claydon, Ipswich Road, The Crown PH	0756	0834	1136	1334	1536	1634	1734
Ipswich, Whitehouse, Goddard Road, Asda	0800R	0838R	1140R	1338R	1540R	1638R	1738R
Westbourne, opp. Norbridge Social Club	0802	0840	1142	1340	1542	1640	1740
Ipswich, High Street, Westgate Street	0808	0846	1148	1346	1548	1646	1746
Ipswich, Old Cattle Market Bus Station Stand M	0810	0848	1150	1348	1550	1648	1748

Code: R - Setting down by request only

Service No:

112 113 114



Ipswich → Eye → Diss

Saturday Only

112 via Stuston

(No Service on Public or Bank Holidays)

113 via Claydon and Mendlesham 114 via Claydon and Debenham

Service:	114	113	114	113	114	114	113
Ipswich, Old Cattle Market Bus Station Stand M	0820	0920	1210	1500	1615	1745	1810
Ipswich, Tower Ramparts Bus Station Stand FF	0823	0923	1213	1503	1618	1748	1813
Westbourne, Norbridge Social Club	0829	0929	1219	1509	1624	1754	1819
Ipswich, Whitehouse, Goddard Road, Asda	0833	0933	1223	1513	1628	1758	1823
Claydon, Ipswich Road, The Greyhound PH	0837	0937	1227	1517	1632	1802	1827
Claydon, Edinburgh Gardens	0838	0938	1228	1518	1633	1803	1828
Barham, Norwich Road, Sorrel Horse PH	0840	0940	1230	1520	...	1805	1830
Little Stonham, Stowmarket Road, Valley Farm	...	0948	...	1528	R
Forward Green, Blacksmiths La, opp Weylands Farm	...	0952	...	1532	R
Mendlesham Green, Green Man Corner	...	0956	...	1536	R
Mendlesham, Kings Head PH	...	1000	...	1540	R
Brockford Street, A140, opp Wetheringsett Turn Bus Shelter	...	1003	...	1543	1845
Thwaite, A140, opp Bucks Head PH	...	1005	...	1545	1847
Stoke Ash, A140, White Horse PH	...	1009	...	1549	1851
Mickfield, Stonham Road, Crossroads
Little Stonham, Valley Farm	0848	...	1238	1813	...
Stonham Aspal, Stowmarket Road, Pound Corner	0851	...	1241	1816	...
Mickfield, Stonham Road, Crossroads	0855	...	1245	1820	...
Debenham, High School / Leisure Centre	0859	...	1249	1824	...
Debenham, High Street, opp Bus Shelter	0902	...	1252	1827	...
Aspall, B1077, Valley Cottage	0905	...	1255	1830	...
Rishangles, B1077, opp Baptist Church	0909	...	1259	1834	...
Thorndon, Black Horse PH	0913	1013	1303	1553	...	R	R
Thorndon, B1077, The Wash	0915	1015	1305	1555	...	R	R
Occold, The Street, opp School	0918	1018	1308	1558	...	R	R
Eye, Lambseth Street, Town Hall Bus Shelter	0923	1023	1313	1603	...	1840	1856
Guaranteed connection to 113/114 with no need to change buses							
Service:	112	112	112	112	112	112	112
Eye, Lambseth Street, Town Hall Bus Shelter	0923	1023	1313	1603	...	1840	1856
Brome, B1077, Opp Oaksmere Entrance	0926	1026	1316	1606	...	1843	1859
Stuston, Stuston Road, Roundabout	0929	1029	1319	1609	...	1846	1902
Diss, Victoria Road/Rose Lane Bus Stop	0932	1032	1322	1612	...	1849	1905
Diss, Bus Station Park Road	0935	1035	1325	1615	...	1852	1908

Code:R - Setting down by request only

March 2023

WK	Monday	Tuesday	Wednesday	Thursday	Friday	Saturday	Sunday
			1	2	3	4	5
			Over 60's Roy Tricker in St Mary's 2pm		St Mary's Day of Prayer 10am Coffee & Cake Village Hall 10.30		
	6	7	8	9	10	11	12
	PC meeting Village Hall 7.30pm						
	13	14	15	16	17	18	19
	Quiz Village Hall 7.30pm	WI Hidden Bhutan Village Hall 7.30pm			Library Van Village Hall Car Park 12.20pm Supper Evening Village Hall 7.30pm		St Mary's Mothering Sunday Service 11am
	20	21	22	23	24	25	26
				Mahjong Village Hall 2 – 4.30			
	27	28	29	30	31		
					Coffee & Cake Village Hall 10.30		

April 2023

WK	Monday	Tuesday	Wednesday	Thursday	Friday	Saturday	Sunday
						1	2 St Mary's Palm Sunday 11am
	3	4	5 Over 60's Flight from Iran Village Hall 2pm	6	7 Perfect Perennials Opening St Mary's Good Friday Walk 12 Service 2pm	8	9 St Mary's Easter Sunday Service 6am
	10 Quiz Village Hall 7.30pm	11	12	13	14 Library Van Village Hall Car Park 12.20pm	15	16
	17	18 WI Bathroom Door Village Hall 7.30pm	19	20	21	22 Supper Evenings Village Hall 7.30pm	23
	24	25 WI Bathroom Door Village Hall 7.30pm	26	27 Mahjong Village Hall 2-4.30	28 Coffee & Cake Village Hall 10.30	29 Footpath Walk Village Hall 2pm	30

USEFUL CONTACT NUMBERS

Police (Non Emergency)	101
NHS (Non Emergency)	111
Suffolk Joint Emergency Planning Unit	01473 265321
Suffolk Police HQ (Non Emergency)	01473 613500
Suffolk Police Direct	01473 613997
Suffolk Fire & Rescue (Non Emergency)	01473 588888
Environment Agency Incident Helpline	0800 80 70 60
Environment Agency Floodline	0345 988 1188
Suffolk County Council	0345 6066 067
Gas	0800 111 999
Electricity (Power Cuts & Network Emergencies)	105 08007 838 838
Anglian Water	03457 145 145
Essex & Suffolk Water	03457 820 999
Dial A Ride (Optua Transport)	01449 614271
Suffolk Link	01449 616000

VILLAGE CONTACTS

Earl Stonham Parish Council Street Lighting Fault Line	0800 591055
Earl Stonham Recorder (Deb/Margaret)	711461/711779
Earl Stonham Trust (Jennie Griffiths)	711794
Earl Stonham Website (Mark Gillett)	07984 518959
Parish Clerk (Jennie Blackburn)	721369
WI (Christine Double/Lindsey Stone)	07775 507083/ 711602
Over 60's (Joan & Vera)	711294/710128
Village Hall Bookings (Deb Turner)	711461
Neighbourhood Watch (Tony Fowler)	711159
Theatre Guild (David Kirk)	710300
Cricket Club (Simon Edgar)	711572
Parish Room (Frankie Wicks)	711222