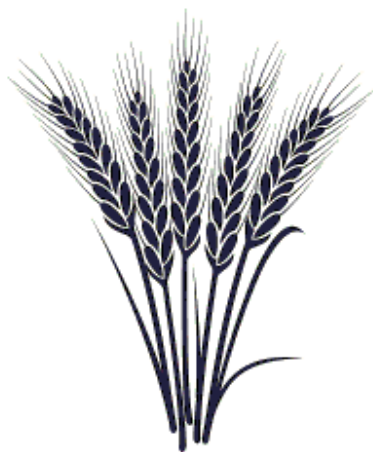


EARL STONHAM RECORDER



~ AUTUMN 2022 ~

THE PARISH MAGAZINE
FOR EARL STONHAM

Email: Recorder@btinternet.com
Website: www.earlstonham.org.uk

EARL STONHAM RECORDER

PUBLISHED BY THE PARISH COUNCIL

ISSUE NO 253 – AUTUMN 2022

EARL STONHAM PARISH COUNCIL NEWS



Welcome to another edition of the Recorder, which is appearing in both print and online versions. As I write this article, we are experiencing a heatwave reminiscent of 1976. Much as I love the sunshine, we do need some rain – our pond is not far from drying out, the first time it has done so in our time here.

Earlier this summer we marked Her Majesty the Queen's Platinum Jubilee, after 70 years of service and over the course of the first weekend of June we joined in with the celebrations taking place across the country. Events commenced on the Thursday evening with the lighting of the beacon, accompanied by a choir of volunteers and with refreshment provided by villagers who had baked special Jubilee Tarts – over 150 people attended what was a fantastic evening. A special jubilee themed Pub Night took place on the Friday evening, with 60 people enjoying Cornish Pasties with a slide show featuring photographs of villagers over the last 7 decades and hanging from the ceiling, the model of the Red Arrow flying through a cloud was the piece de resistance.

Following a church service at St Mary's, the final event, the Big Celebration Lunch took place at the village hall. Again over 200 people attended and enjoyed the sharing spread contributed by everyone who came along. At the start of this the Jubilee Garden was officially opened by County Councillor Matthew Hicks.

I must again express my thanks, and those of my fellow Parish Councillors, to all those who worked so hard to make the weekend a success – too many to mention individually, but you know who you are and without your input what was achieved would not have been possible. The Parish Council made a donation to the Village Hall to enable a tribute to be placed in the Jubilee Garden to recognise all the volunteer effort that went into, not only the events of the weekend, but the creation of the Jubilee Garden.

The Community Speed Watch Team has been operating since June and several sessions have taken place. In the first 3 sessions 47 vehicles were recorded as speeding, of which 16 were travelling at over 40mph. Over the coming weeks and months, we hope to settle into a regular pattern of checks (which can only take place during daylight hours). Although we now have 10 fully registered volunteers, we would welcome additional volunteers so if you are interested, please email dawngillett20@gmail.com

Updates from the Parish Council

- A small working group has been set up to explore options for the 7 streetlights for which we are responsible. 2 lights are due to be replaced as the lanterns are now at end of life.
- Anglian Water completed work on Saxham Street. The first phase of works to replace the sewer on the A1120 have been completed, with further works planned for October once the A134 roadworks have been completed.
- 30mph stickers have been distributed to residents living along the 30mph stretches of the A140 and A1120 and other suitable roads.
- Letters have been distributed by National Highways giving notice of A14 Weekday Night Closures from 8 August to 10 October – the A1120 is the diversion route. They have indicated that additional signs will be placed in residential areas to remind drivers to take extra care and there will also be a speed camera van located along the diversion. We have since found out that these works have been delayed but should start shortly.
- Over 50 people attended the public meeting held at the beginning of June to discuss the National Grid proposals to reinforce the high-voltage electricity network from Norwich Main substation via Bramford substation to Tilbury substation in Essex. The preferred route corridor passes to the west of the Parish, along Saxham Street and running South between Stowupland, Stowmarket and Needham Market. I think it fair to say that there was unanimous opposition to the proposals.

Earl Stonham Parish Council submitted a response objecting to the proposals, as did Suffolk County Council, Mid Suffolk District Council

and many other Councils. MPs in the region have also voiced their opposition. We now await National Grid's evaluation of the responses before they come back with a further consultation in 2023.

More information about the proposal can be found on the Village Website:

<https://earlstonham.org.uk/east-anglia-green-energy-enablement/>

The next meetings of the Parish Council will take place on **5 September and 7 November**, will be held at the Village Hall and will start at 7.30pm. Our meetings are open to the public and all are welcome to attend.

Mark Gillett
Chair - Earl Stonham Parish Council





PERFECT PERENNIALS

Small Business
Saturday
Dec 3rd

Phew what a scorcher...!!!.....

Hopefully by the time you read this we will have had some rain but at the time of writing pretty much everywhere is looking decidedly dry. Lawns are brown, gardens are parched, rivers and ponds are low and even parts of our box hedging is showing signs of dying off. Having to water the plants by hand nearly every day is getting tedious, I just hope this is a one off year.

Thankfully we had a fantastically busy Spring with lots of new faces coming to visit us for the first time. Our regular customers are just amazing and it's a pleasure to see you every year. Karl was busy taking the van out to various local plant fairs most weekends in April and May,

I am so grateful to him for bringing back a near empty van each time! This has resulted in over 9,000 plants being sold which is a phenomenal amount of our stock. We still have some lovely looking Dahlias, Gaura, Rudbeckias and Sedums left, but don't leave it too long!

We have plenty of compost available for Autumn bulb potting.

Westland Multi Purpose 50L: £4.40 each

Westland Peat Free 50L: £5.50 each

Westland Multi Purpose with John Innes 50L: £5.50 each

Our pot swap scheme has been very popular again this year.

In our car park you will find a large wooden crate where you can drop off old plastic plant pots or take some home to reuse.

Far better than throwing them into land fill.

That's all for now, lots of seed sowing and plant propagating to do for 2023

Monday to Saturday: 9 til 5 Sun + Bank Hols: 10 til 4 Closed Thurs

www.perfectperennials.co.uk Facebook Instagram 01449 711320

It's that time of year again to meet up
with friends, listen to great music
& relax !!!

Sunday 4 September 2022
at 12.30pm
on Earl Stonham Village Green

Bring a picnic, something to sit on
& join in the fun!





EARL STONHAM VILLAGE HALL SUPPER EVENINGS 2022

Sat 10th Sep Savoury Chicken

Sat 15th Oct Mobile Pizza Van

Sat 19th Nov Chilli Supper

Sat 10th Dec Festive Food



Everyone welcome
Bar open from 7pm



Tickets to include food - £12

In October food can be bought from the
visiting PIZZA VAN

To book a place, email Deb at
Recorder@btinternet.com

GraveTalk

It's not easy to talk about death, dying and funerals.

GraveTalk is designed to get the conversations started.

There are no answers - just thought-provoking questions to get us thinking - and talking about these topics in a relaxed, easy context. We are planning to have one like a special 'Coffee and Cake' in the Village Hall on Friday September 9 at 10.30am and it will probably last about 1.5 hours.

There will be the usual coffee/tea and cake served at the beginning and people will be asked to sit at tables of 3 or 4, then with the help of 'conversation cards' we shall have an opportunity to think about the questions on the cards. It has been tried in many places and found to be helpful. Never mind if you have never been to a 'Coffee and Cake', just come and see how we go.

Frankie Wicks



Exercise Therapy Studio

Take Control of your Body



Exercise Therapy Studio - Fitness and Wellbeing classes with a difference.

Zoe and Theresa have over fifteen years of experience in helping people to improve their fitness and specialise in supporting clients with health issues such as musculoskeletal conditions such as back, shoulder and knee complaints. Heart conditions, Cancer and more.

Fit & Tone Classes: from £6.50

This class is low impact with toning exercises for a total body workout using small equipment. The classes are led by Theresa who will guide you through correct form and technique.

We change that class every week so you won't get bored, and we will keep you smiling and motivated.

We are experienced in dealing with injury and rehab, so we can give variations on exercises if required. Classes are suitable for all fitness levels and all ages. From ages 16 to 70+

Our classes are small with only 8 in each class so we can give good quality instruction.

Pilates: Classes from £7.50

This is a beginner / intermediate mat Pilates class. This class will improve strength, function, and flexibility. Pilates helps to improve posture and reduce tension on joints. We use small equipment such as bands, balls and rollers and the routine changes each week to keep the classes varied and fun, we will keep you smiling and motivated.

If you have not tried Pilates before, or if you have any specific health conditions we would recommend a one-to-one session with Zoe before joining a class. Suitable for all fitness levels and ages.

For more information on our classes, workshops and rehab sessions go to www.exercisetherapyonline.com or contact Zoe on 07931546858, you can also email us at exercisetherapyonline@gmail.com

*Exercise Therapy Studio, The Fitness Suite, The Highwayman, Norwich Road (A140),
Creeping St. Mary, Ipswich IP6 8PD*



Orchard Garage DMS Ltd was previously run from Church Road, Stowupland. We moved to Middlewood Green as a Limited Company in 2018. We have over 20 years of technical experience. Our goal is to deliver outstanding customer service to repair, service and MOT all makes and models to the highest possible standard at very competitive prices. We also can supply and fit tyres at very competitive price.

We look forward to welcoming you to Orchard Garage, please ring for a quotation or to book an appointment.

Telephone – 01449 711436

Email – Orchardgaragedms@outlook.com

**Address – Orchard Garage DMS Ltd, White House Farm,
Middlewood Green, Stowmarket, Suffolk, IP14 5HE**



Dick Whittington

Stonham Theatre Guild presents

Dick Whittington
by Warren McWilliams
By arrangement with Lazy Bee Scripts

Earl Stonham Village Hall

Friday 2 December - 7pm
Saturday 3 December 2pm & 6.30pm

Adults £7.00 - Children £5.00

Box office : boxofficestg@gmail.com or 01449 711461

EARL STONHAM
QUIZ NIGHTS

2022

will be held
in the VILLAGE HALL at 7.30pm

MONDAY

12th September

10th October

14th November

12th December

Licensed bar open from 7pm.

Everyone most welcome!

£3 per person with teams of up to 6 players

**EARL STONHAM
VILLAGE FOOTPATH WALK
Sunday 18 September 2022**



It will be the **new Platinum Route** this time finishing at the Village Hall for refreshments.

Join us at the Village Hall for a 2.00pm departure. The walk will be led by
Tony Stevens

Dogs on leads are welcome

Domestic and commercial Upholstery
Curtains, Roman blinds & Soft furnishings



AMUSF Trained Upholsterers

Traditional & Modern Upholstery methods

Cushions

Footstools

Headboards

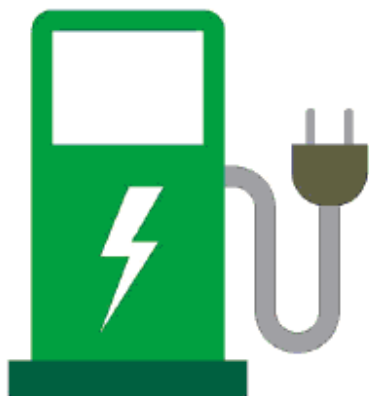
Deep buttoning Chesterfield style

Dining Chairs

Leather refurbishment

Stonham Interiors
Unit 4c Station Road Ind Est
Elmswell
Suffolk
IP30 9HR

Mobile: 07791 789899
Email: lee@stonhaminteriors.co.uk



ELECTRIC VEHICLE CHARGING STATION

As part of the 'Greenest County' scheme by Suffolk County, grants were made available for the installation of electric vehicle chargers. Earl Stonham applied for one of these and a charger has now been installed at the Village Hall.

This is located at the far corner of the car park adjacent to the old Bowls Club entrance and is a 2 socket, 7kw charger and costs **45p per kw** with any profit going to the village hall. It is available for anyone to use and can be used with a normal contactless credit/debit card or via a smartphone app.

Tony Turner



JD Tree Services

& COUNTRYSIDE MANAGEMENT

- Tree removal, felling or reduction
- Site clearance
- Stump grinding
- Waste removal
- Hedge cutting
- Chipping
- Firewood

**Professionally trained, fully insured,
friendly service**
Call today for a free no obligation quote



mobile: 07736 311782
email: info@jdtrees.co.uk
web: jdtrees.co.uk



A Summer Poem!

I'm sure their parents love them but I cannot say the same,
Mum has them by the hundred and knows their every name.

They're very very ugly and so's that buzzing noise,
I'm sure by now you know that I refer of course to flies!
They land upon your sausages as though it is their right
You swat them with a tea towel – they've already taken flight.

They rub their legs together as they sit upon your toast
You know that where they last sat down was somewhere really gross.

I try to spray them but I'm sure they've learned to read and write,
They recognize the spray can when I bring it into sight.

I pick on one and target it and spray into the air,
And suddenly there's one fly less and I don't really care.

And I must be so evil 'cos when I had no spray.

I used the lacquer for my hair and watched them glide away.

And when it comes to thunder flies please don't get me started,
They make me itch because they land just where my hair is parted.

Arriving in their thousands, just like a full-scale army
Crawling over hands and face, enough to drive you barmy.

And just in case you think the above cannot be beat,

A mosi lands upon your arm and settles down to eat!

For all your sewing repairs, alterations and curtain making
Contact Pauline on 01449 711384 or pbirchnall@gmail.com



EARL STONHAM VILLAGE HALL 2022



16th Sept
Coffee & Cake Friday
10:30 – 12 noon

30th Sept
Library Van 12.20



14th Oct
Coffee & Cake Friday
10:30 – 12 noon

28th Oct
Library Van 12.20



11th Nov
Coffee & Cake Friday
10:30 – 12 noon

25th Nov
Library Van 12.20



9th Dec
Coffee & Cake Friday
10:30 – 12 noon

23rd December
Library Van 12.20



~ VILLAGE INFORMATION ~

THE RECORDER



The Recorder is published every quarter. Don't forget you can advertise in the Recorder which is delivered to every house in the village. The cost for a full page is £30.00 (payable in advance), which is four adverts for the price of three and the money helps towards the cost of producing the Recorder. The advert will be included in four issues, with the option of it appearing on the website via webmaster@earlstonham.org.uk

Please give the advert to Margaret Anthony (711779) or Deb Turner (711461). There is an e-mail address (Recorder@btinternet.com) so if you would like to send your contributions or advertisements electronically, it helps reduce preparation time of the Recorder. Cheques should be made payable to Earl Stonham Parish Council and sent to Deb Turner, The Cottage, Forward Green, Stowmarket, Suffolk IP14 5HZ.

MOBILE LIBRARY & COFFEE & CAKE FRIDAYS



Do look out on the Village Email list and website for future developments on the Mobile Library, Coffee & Cake & much more. Coffee & Cake will be held on 16 Sep, 14 Oct, 11 Nov & 9 Dec at the Village Hall starting at 10.30am until 12 noon. The Mobile Library Van will be there on 30 Sep, 28 Oct, 25 Nov & 23 Dec at 12.20pm

If you would like to join the Village Email list, please send an email to Recorder@btinternet.com. It is a great way of keeping up to date with activities etc in our village.

KH

Kevin Hollings
KITCHEN STUDIO



Unit 14 Lodge Works, Stowmarket Road,
Old Newton, IP14 4EE

01449 257160 www.kevinhollings.com

info@kevinhollingskitchens.co.uk



EARL STONHAM PLANNING APPLICATIONS

The following have been submitted for consideration by the Parish Council

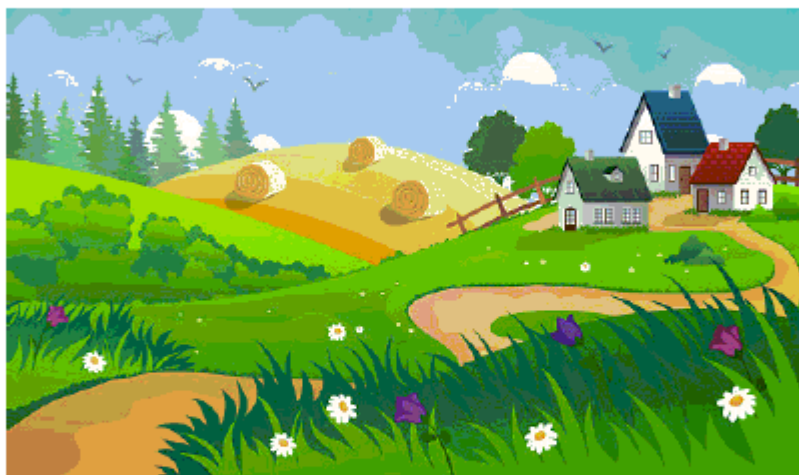
- **Householder Application – End Cottage, Forward Green IP14 5EN - Erection of a shed with an attached log store.
Application DC/22/03240**
- **Discharge of Conditions for DC/21/04808 Condition 3 (Fenestration) -Fen House, Fen Lane, IP6 8QD. Application DC/22/03295**
- **Discharge of Conditions Application for DC/22/01854 Condition 3 (Landscaping Scheme) Condition 5 (Agreement of Materials), Condition 8 (Surface Water Discharge Prevention and Condition 10 (Cycle Storage) – Lime Tree Cottage, Stowmarket Road, Earl Stonham IP14 5HN. Application DC/22/03546**
- **Planning Application – Reinstate the dwelling to its original state of 2 no dwellings. Works to include demolition of single storey rear extension and garage. Erection of two-storey side extensions. Relocation of driveway to provide tandem parking – Lime Tree Cottage, Stowmarket Road IP14 5HN. Application DC/22/03632**
- **Application for a Non Material Amendment relating to DC/21/055329 – Change of roof material from slate to Edgemere concrete interlocking tiles (colour anthracite);**

**Addition of 16no solar panels to roof. Meadow View Farm,
Stowmarket Road IP14 5DZ. Application DC/22/04003**

**If you wish to comment on any planning application, please
contact MSDC Planning Department or go to :
[https://planning.baberghmidsuffolk.gov.uk/online-
applications/](https://planning.baberghmidsuffolk.gov.uk/online-applications/)**

*Please remember, if you wish to comment online, you
MUST register on the website AND log in to ensure your
comments are noted*

*If you send a comment to the Planning Department,
please ensure you also copy it to our Parish Clerk at
parishclerk@earlstonham.org.uk*



Mary Magdalene

Songs from the musical by Roger Jones



Sung by the
Combined Churches' Choir

Saturday 3rd September, 6pm

St Mary Magdalene Church, Debenham

£7.50 on the door - includes a glass of wine and nibbles

*In aid of the Debenham Church Discretionary Fund,
helping local people in need*

David Cook

Drainage and Ancillary Works



SPECIALIST IN:

Ditch maintenance and improvement.

Land drainage and outfall repairs.

Culvert construction and pipe replacement.

New pond construction

Existing ponds restored

Hedge coppicing with excavator shear.

Excavator flailing.

Land and site vegetation clearance.

All other excavation work.

Any size excavators from 2.5 ton mini up to 30 ton long reach

CONTACT:

Tel: 07771 665720

email: dcookdrainage@gmail.com

www.ditchmaintenancesuffolk.co.uk

CP CONSTRUCTION PLANT

CS COMPETENCE SCHEME

**REGISTERED OPERATOR NO: 01380113/2
01380113/2**



Please continue to bring your empty bottles, textiles, newspaper & card (but not cardboard) to the village recycling banks as this helps to raise funds for the village.



Thank you!



Zoë Hyde Podiatry

BSc (Hons), Pod., M.ch.S., H.C.P.C. Reg

Professionally qualified, experienced and caring podiatry service in the comfort of your own home.

I cover the Stowmarket area and surrounding villages.

**Range of treatments include:
Nail Care, Corns and Callus, Verrucae, Diabetic Assessment.**

To book YOUR appointment now,
call: 07925826655

zoe.hyde.uk@gmail.com

www.zoehydepodiatry.com

EARL STONHAM VILLAGE HALL



It seems a long time ago now but I hope everyone enjoyed the Platinum Jubilee celebration weekend. Attendance at the events exceeded our expectations, with so many people from the village taking part.

I would like to thank everyone that helped with organising and running the weekend as it would not have been possible without them.

The hall's own Jubilee 'celebration' has been the creation of the Jubilee Garden behind the hall. I hope you will agree that this has been very successful and has created a tranquil space where weeds and rubbish were before. We still have further plans for the garden including a rear hedge and more shrubs once the ground is suitable.

The Parish Council have also paid for a piece of garden art as a permanent thank you to all that helped over the Jubilee weekend so watch this space for a photo! The garden is there for everyone to use and we have also purchased a large charcoal BBQ that can be used on request – all we ask is that it is thoroughly cleaned after use.

You will hopefully have seen the EV charger that has been installed in the car park. This is for public use and provides two 7kw charge points. Unlike many public chargers, you do not have to use a smartphone app to make it work and it can simply be used with a contactless payment card. As mentioned in the last report, the cost of electricity at the hall has almost doubled recently and so we have had to increase the **cost per kw hour to 0.45p**, however this is still cheaper than most other commercial chargers.

Pub nights continue to be well supported and a list of the dates and the food planned for the next few months is elsewhere in the Recorder. We have decided to re-brand these to 'Supper Evenings' but the format remains the same and if you don't want to eat, you are still very welcome to come along for a drink and chat.

We are again holding a Picnic on the Green which will be on **Sunday 4th September** so please come along with your picnic and something to sit on and enjoy making use of our historic village green. We will also have some live music courtesy of Tony Haley and John Perkins.

The Stonham Theatre Guild Christmas pantomime this year is Dick Whittington and as usual will be staged during the first weekend in December. Full details are elsewhere in the Recorder.

Tony Turner
Chairman

Earl Stonham Village Hall Management Committee
07710 018743





PLACES AVAILABLE
from September

We offer play-based provision in our purpose built premises. We have an outdoor area where we spend large parts of the day, with a big sandpit, slide, playhouse and a mud kitchen for messy play.

We work in partnership with parents to plan individually for each child, maintaining detailed notes and photographs which we use to identify how to support each child in meeting their full potential. We tailor the setting to meet the needs of each family.

We use Tapestry for the childrens' online learning journal, which both ourselves and our parents can upload information to. This can be continued in reception class at Stonham Aspal Primary school.



Places available from September

Please contact Julie Ponton on **07977 641381** or email: stonham-aspal@btconnect.com for further information

www.stonhamaspalpreschool.org.uk

THE STREET, STONHAM ASPAL, IP14 6AF



Registered Charity no. 1114259



CRAFT JOINERY LIMITED



BESPOKE CARPENTRY, JOINERY & CABINET WORK

*KITCHENS, DOORS & FRAMES, STAIRS,
BANNISTERS & BALUSTRADES*

SYMPATHETIC RESTORATION WORKS FOR LISTED PROPERTIES

WINE CELLARS A SPECIALITY

***ALL ENQUIRIES, REQUESTS FOR QUOTES OR
FURTHER INFORMATION:***

CALL CHRIS WARREN ON 07725 836042

E-MAIL CHRIS.WARREN@CRAFT-JOINERY.CO.UK

WWW.CRAFT-JOINERY.CO.UK

ESTABLISHED 2007

WOULD YOU LIKE TO HIRE THE VILLAGE HALL?

There is a large hall with dance floor & stage. Ideal for barn dances, parties, discos or drama productions. Tables & chairs can be set up for dining or for Quizzes or Bingo evenings & there is a club room where smaller groups can gather.

Also a well-equipped kitchen with two cookers, a fridge-freezer, heated trolley, sinks and extensive working area. The hall opens out onto the adjoining recreation ground with a multicourt and small children's playground. Perfect for picnics & a small bouncy castle can be erected for children's parties

Charges for the hire of the Village Hall PER HOUR from April 2021:

For Earl Stonham Residents		For Non-Residents	
Clubroom	£ 8.00ph	Clubroom	£ 9.00ph
Hall	£10.00ph	Hall	£12.00ph
Hall & Club Room	£16.00ph	Hall & Club Room	£19.00ph
Over 6 Hours (All Areas)	£105.00	Over 6 Hours (All Areas)	£125.00
Over 6 Hours (Club Room)	£50.00	Over 6 Hours (Club Room)	£ 55.00

Please contact Deb Turner (711461) to book the hall

J. FELTON CHIMNEY SWEEP



PLEASE CALL 01986 799175

CLEAN & FRIENDLY SERVICE

FULLY INSURED

SMOKE TESTS

INSURANCE CERTIFICATES

CCTV INSPECTIONS

COMPETITIVE RATES

REGISTERED MEMBER OF THE INSTITUTE OF CHIMNEY SWEEPS

 ICS



MEETING UP FOR PRAYER IN CHALLENGING TIMES

As our nation faces yet more challenges and change on top of existing international concerns, Jesus is our one sure foundation. Once a month Christians in the village, who attend different churches, meet together to pray for issues affecting the parishes of Earl Stonham and Stonham Parva (including issues arising out of national and international affairs) and for individuals who would like prayer for a particular need.

Meetings will normally be held at 2.30pm on the third Monday of the month in the Parish Room. To confirm the date and venue if you would like to join us, or if you would like to request prayer for an issue or individual, please contact Maggie Podd (07939 912080), Frankie Wicks (01449 711222), Philip Payne (Rector 01449 711684) or Helen Norris (Assistant Priest 01449 761867).



Providing Personal Care in your own home

My Care at Home is a small family run business covering Suffolk and based in Stowmarket. Our commitment is to provide 'high quality care', which we deliver through our greatest asset, our staff and the training that they receive. We only employ people who love to care.

We provide the following Services:

Personal Care and companionship
Respite Care
Dementia Care
Help around the house

Your care package could be a one off arrangement, ad-hoc or on a regular basis.

If you receive care through Social Services, you can request for a personal budget so you can chose your own care provision. Please call us for more information.

Request a Brochure or book an appointment on 01449 763086

Find us on Facebook or visit our website www.mycare-at-home.co.uk

We are also recruiting NOW - We need exceptional people who love to care

117 Ipswich Street, Stowmarket, Suffolk IP14 1BB

EARL STONHAM WI



It has been a bit warm hasn't it? We had progressed to having the Earl Stonham WI Committee Meetings outdoors sitting in the splendid new Jubilee Gardens. Unfortunately, on the last occasion, we were driven indoors by the wasps! The year is waltzing past and we are now planning our Christmas Dinner – always a big event in the WI calendar! We would love to have you as a new member so please do get in touch with one of our committee members as detailed below.

Regular afternoon Mahjong sessions take place in the club room. You don't need to be a WI member to join the group and you are very welcome to come along even if you've never played Mahjong before.

If you would like to attend any of our monthly meetings, we would be delighted to see you in the clubroom in the village hall on the **THIRD TUESDAY** of each month at 7.30pm. For more details please contact Christine Double on 07775 507083 or Lindsey Stone on 711602

WI Programme 2022

Sep 20	Wonderful World of Stinging Nettles
Oct 18	ANNUAL MEETING & Social evening
Nov 15	Where do Medicines come from?
Dec tbc	Christmas Meal





***Fancy Dress
Costume Hire***

***Church Farm
Earl Stonham***

www.masqueradeshop.co.uk

Open Tuesdays to Fridays 10am-2pm

Saturday 10am-3pm

All other times by appointment

Telephone: 01449 711109

Email: sallymasquerade@gmail.com

EARL STONHAM TRUST REPORT



The recreation ground is a much admired village asset, but, at the time of writing, is not looking as pristine as usual! Doubtless much needed rain will restore the grass & give the Cricket Club more mowing work to do. In the meantime, the play equipment is inspected weekly, but if anyone has any concerns, please contact one of the trustees mentioned below.

The trustees continue to liaise with the Village Hall committee about the future of the redundant Bowls Club site which is hoped will enable further use to be made of the area.

Please be aware, one of the main features of the Trust is to consider awarding grants for financial need and educational and training purposes for residents of Earl Stonham. Another academic year is starting and if assistance is required for yourself or if you are aware of another, do contact one of the Trustees or download an application form from the Village website www.earlstonham.org.uk. Alternatively, write to Jennie Griffiths at Cornfields, Wicks Lane IP14 5HL or jfrgriffiths@yahoo.co.uk. All enquiries are dealt with confidentially. The Trust meets next on 8 September.

Karl Wilkinson (711320)

Phil Hurt (711879)

Jennie Griffiths (711794)

Frankie Wicks (711222)

Sharon Budd (711243)

Mark Gillett (711457)

Tony Turner (711461)

FROM YOUR LOCAL RECORDER

John Jones

The main role of the Local History Recorder is to see that current records are preserved and events recorded, for the benefit of future generations. Delving into earlier records is far more interesting, but this is a secondary role. I have seen photographs of local celebrations of King George V's Silver Jubilee in 1935 and of the fete to celebrate the coronation in 1953, but I haven't got copies of either. Can anyone lend me photographs of either event, to copy for the archives?

The Jubilee celebrations were a great success, thanks to the hard work of Tony Turner and his organising committee. On the third and final day an estimated 200 people enjoyed a bring and share lunch at the Village Hall, where the new Jubilee Garden was formally opened by Matthew Hicks.



EARL STONHAM OVER 60'S (The Golden Circle)

For our second coach outing of the year, we drove to the Bressingham Garden Centre for lunch, followed by a very interesting visit to the Mechanical Music Museum at Palgrave. We enjoyed a guided tour, with music, of the collection of 'self-playing musical instruments' such as music boxes, pianolas and very large and loud fairground organs. The visit finished with a cinema organ recital played by David Ivory (no relation).

The Club's birthday party in July was a return visit to Stowmarket Golf Club for a sit-down meal. Members were able to choose from a varied menu of two or three main courses and various desserts.

On a beautiful day in August, members and friends went to Pensthorpe Natural Park at Fakenham. The park describes itself as a 700-acre family-friendly nature reserve. It also has a sculpture garden, cafe and gift shop and plenty of seats!

In September the last outing of the summer is a river trip on Oulton Broad. Our Harvest Festival in October will be led by Andy Malcolm from the Fishermen's Mission. The AGM is in November and will include a picture competition and finally in December we will celebrate Christmas with a lunch in the Village Hall.

If you would like to join us at any of our meetings, come along to the Parish Rooms where you will be most welcome. Please contact Joan on 711294 if you would like more information on

our meetings or outings which take place on the first Wednesday of each month.

Vera Ivory

Programme for 2022

September 7	Oulton Broad River trip
October 5	Harvest Festival
November 2	AGM
December 7	Christmas Party



Stonham Ladies Stay Fit Class

***Held in Little Stonham Baptist Chapel
Every Friday from 11.00 am to 12.00***

A group of local friendly chatty ladies aged between 50 something and 80 something meets every Friday morning for a fairly gentle exercise class in the hall of the Chapel on the A140. We wear loose trousers and T shirts and laughter is as much an exercise as those shown by our lovely kind instructor - who quickly comes up with an alternative exercise if anything is beyond someone's abilities.

The exercises are mainly standing, walking and stretching, with a few chair exercises for a change.

The cost is just £4 a session and there is no joining fee.

Why not come along, with a bottle of cold water, next Friday at 11.00, and give it a try.



EARL STONHAM CRICKET CLUB



With only five weeks of the season remaining, we are currently sitting 4th in the league on Saturdays which is a vast improvement on last season. We probably could have been sitting higher but we have come up against two very strong teams in our division. One of them has a professional from South Africa in their ranks, who has a first-class average. I really struggle to see why on earth he is playing in Division 6, but I guess it must purely be financial. Availability of players has also helped our cause this season which has enabled us to field strong sides throughout the summer. I think 3rd in the table is the best we can hope for this season, but I think we would need to win every game in our run in to achieve that.

It has been good fun to visit new grounds around Essex & Suffolk and none more for me was our visit to Sudbourne CC just outside Orford. The ground is situated in the picturesque grounds of the original hall. Cricket has been played there since 1893 and the pavilion looked like the original. A hospitable and social team to play against and who provided the best tea I have seen in quite a while. Like us they are a small village side and it's great to see them continue for so long.

Sundays are also going pretty well with the team sitting 4th, although we have had some availability challenges in recent weeks which has meant us playing with 10 on a couple of occasions, but still a positive season with only three games left.

With us fielding two teams a weekend it does challenge our squad depth so if anyone is interested in playing, we would love to hear from you. It would be great to see a few more local residents turning out for the village team, so if you are interested please contact myself or Luke Edgar (Captain) on 07794 599402.

On Sunday 28th August we will be holding our annual President XI v Chairman's XI. We have held this now for many years and it was set up originally as a memorial game for a former treasurer Gary Small. We now also will be remembering our former President Tony Porch at this game every year as well.

This is a fun game and if anyone would like to take part in it, young or old then please contact me. We do have a few sponsors and VP's that turn out to play in this match each year. If you just fancy watching then please pop over, the bar will be open for refreshments.

Other events coming up include a Race Night in October and the Annual Awards dinner which is being held on Saturday 19th November. If you are interested in either, just drop me a line.

As I write this in 30 degrees heat, I do reflect on what a great summer we have had, too hot at times but not to have a single game cancelled to this point is very rare. I am sure I am not alone in hoping for a downpour or two soon.

Simon Edgar – Hon Club Secretary

07974 132468

Simonedgar11@sky.com





ST MARY'S CHURCH

EARL STONHAM with STONHAM PARVA

www.earlstonham.org.uk and click on Communities
& www.achurchnearyou.com/church/2011/

The good news is that Stonham Parva Church is open again. It has been closed for 3 years as essential repairs had to be done to make it safe. We are extremely grateful to the Church's Conservation Trust for funding and organising this huge and expensive project.

A Celebration service was held on July 31 and was much enjoyed by the large congregation from across our 8 parishes. Now we are planning

**Carols by Candlelight at Stonham Parva Church on Saturday
December 10 at 4pm**

Services at Earl Stonham

Generally there is:

Holy Communion on the 2nd Sunday of each month at 11am

Morning Worship on the 4th Sunday of each month at 11am

Online Zoom Morning Worship continues every Sunday at 9.30am

Online Zoom Morning Prayer continues every Tuesday at 9am.

Having said that, there may be changes and events such as Harvest and Remembrance Sunday change the pattern. If you would like

to receive a weekly Notice sheet by email, please contact Liz and John Ince on lizandjohnince@gmail.com and they will send you them to you.

Dates for your Diary

GraveTalk Friday September 10.30am in the Village Hall, see elsewhere in this magazine for details.

Harvest Festival Sunday September 25 at 11am. Hopefully a Bring and Share Harvest supper on Saturday 24 at 7pm in the Village Hall.

Service of Light remembering those who have died, Sunday October 30 at 4pm

Remembrance Service Sunday November 13 at 10.50am

Carols by Candlelight in Earl Stonham Church on Christmas Eve at 6.30pm

Christmas Day 11am Holy Communion at Earl Stonham

Contacts for the Ministry Team

Rector	Rev Philip Payne revphilippayne@btinternet.com	01449 711684
Reader	Henry Stanford	01449 711742
Churchwardens	Jane Porch Mark Parry	01449 711809 01449 711816
Lay Elder	Jane Porch	01449 711809

Anyone who would like support at home, in hospital or wherever, likewise please ask.

The Parish Room



The Parish Room is on the lane beside the church and has parking adjacent. Now that we are getting out more it may be useful. It is suitable for meetings, parties, rehearsals etc. The charge is £6 per hour including heating and the use of china, cutlery and glasses etc. If anyone would like to see inside, or book it, please contact Frankie Wicks on 07786 746 880.

BAPTISM

10 Jul Albie Chaplin

MARRIAGE

30 Apr Michael Abram & Sandra Thurlow

DEATH/FUNERAL

18 Mar Laraine Shaw

16 Jun Margaret Stace

24 Jun Ray Cattermole

Coffee & Cake



16 Sep, 14 Oct, 11 Nov & 9 Dec

Mobile Library



This calls at the Village Hall at 12.20pm once every 4 weeks although lunches have not re-started. We'll see how it goes. Don't worry if you haven't got a Library Card, or if, like me you have lost it, they will sort it out.

Dates for the rest of the year are
30 September, 28 October, 25 November & 23 December

VILLAGE INFORMATION PACK

A recently updated and extremely useful information pack can be obtained by ringing Margaret Anthony on 711779 or downloaded from the website: www.earlstonham.org.uk

The EARL STONHAM RECORDER is published by the Parish Council. Anyone wishing to contribute may like to make a note of the following:-

	<i>Contributions to the editors by</i>	<i>Distribution by</i>
WINTER	<i>Fri 4th Nov 2022</i>	<i>Mon 21st Nov 2022</i>
SPRING	<i>Fri 17th Feb 2023</i>	<i>Mon 6th Mar 2023</i>
SUMMER	<i>Fri 12th May 2023</i>	<i>Mon 29th May 2023</i>
AUTUMN	<i>Fri 11th Aug 2023</i>	<i>Mon 28th Aug 2023</i>

*Editors - Margaret Anthony
Middlewood House, Blacksmiths Lane - 711779
Deb Turner - 711461*

Distribution - Karl Wilkinson - 711320

CONTRIBUTIONS FOR THE NEXT EDITION

*By Fri 4 Nov 2022 to Margaret Anthony
Middlewood House
Blacksmiths Lane - 711779
or by email to Deb Turner at Recorder@btinternet.com*

Contributions for the website can be forwarded to
webeditor@earlstonham.org.uk

RECYCLING BINS - TELEPHONE NUMBERS



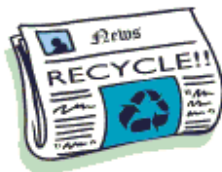
If you see that the Recycling Bins at the Village Hall are nearly full, please call the following numbers:



Glass
Indigo Waste Management
01842 820804



Textiles/Clothing
0800 090 2321



Newspapers/Card
0300 1234 000

Service No:

110 112 113 114



Diss → Eye → Ipswich

Monday - Friday

110 via Mellis 112 via Stuston

(No Service on Public or Bank Holidays)

113 via Mendlesham and Claydon 114 via Debenham and Claydon

Service:	112	112	112	112	112	112	110	112	112	112	112
			Sch	NSch							
Diss, Bus Station Park Road	0607	0650	0735	0735	1000	1125	1330	1715	1755
Diss, Victoria Road/Vinces Lane Bus Shelter	0610	0653	0738	0738	1003	1128	1333	1718	1758
Palgrave, opp. Church	1335
Worham, opp. Mellis Road Bus Shelter	1338
Mellis, Railway Tavern P.H.	1342
Yaxley, Cherry Tree P.H.	1345
Stuston, Stuston Road, Roundabout	0612	0655	0740	0740	1005	1130	1720	1800
Brome, B1077, Oaksmere Entrance	0615	0658	0743	0743	1008	1133	1723	1803
Eye, Lambseth Street, opp. Town Hall	0620	0703	0748	0748	1013	1138	1349	1728	1808
Guaranteed connection to 113/114 with no need to change buses											
Service:	114	113	114	114	113	114	113	114	114	113	114
			Sch	NSch							
Eye, Lambseth Street, opp. Town Hall	0620	0703	0748	0748	1013	1138	1349	1413	1528	1728	1808
Occold, The Street, School	0625	0708	0753	0753	1018	1143	1354	1418	1533	1733	1813
Thorndon, B1077, The Wash	0630	0713	0758	0758	1023	1148	1359	1423	1538	1738	1818
Thorndon, Black Horse P.H.	0632	0715	0800	0800	1025	1150	1401	R	1540	1740	1820
Stoke Ash, A140, opp White Horse PH	...	0720	1030	...	1406	1745	1825
Thwaite, A140, Bucks Head PH	...	0724	1034	...	1410	1749	...
Brockford Street, A140, Wetheringsett Turn Bus Shelter	...	0726	1036	...	1412	1751	...
Mendlesham, opp. Kings Head P.H.	...	0729	1039	...	1415	1754	...
Mendlesham Green, Green Man Corner	...	0733	1043	...	1419	1758	...
Forward Green, Blacksmiths La, Weylands Farm	...	0736	1046	...	1422	1801	...
Rishangles, B1077, Baptist Church	0637	...	0805	0805	...	1155	...	1425	1545
Bedingfield, The Street, The Pump (School days Only)	0810
Aspall, B1077, opp Valley Cottage	0641	...	0816	0809	...	1159	...	1429	1549
Debenham, High Street, Bus Shelter	0645	...	0820	0813	...	1203	...	1433	1553
Debenham, Leisure Centre	0647	...	0822	0815	...	1205	...	1435	1555
Mickfield, Debenham Road, Crossroads	0652	...	0827	0820	...	1210	...	1440
Pettaugh, Bus Shelter	1603	...
Stonham Aspall, Stowmarket Road, Pound Corner	0655	...	0830	0823	...	1213	...	1443	1607
Little Stonham, A1120, opp Brewery Farm	0702	0741	0837	0830	1051	1220	1427	1450	1614	1806	...
Barham, Norwich Road, opp Sorrel Horse PH	0710	0749	0845	0838	1059	1228	1435	1458	1622	1814	...
Claydon, Edinburgh Gardens	1101	1230	1437	...	1624	...
Claydon, High School (School days)	1500
Claydon, The Crown P.H.	0713	0752	0848	0841	1103	1232	1439	1506	1626	1817	...
Bramford, Papermill Lane op Whitton Layer	1512
Chantry, Suffolk One	0905C
Ipswich, Whitehouse, Goddard Road, Asda	0717R	0756R	...	0845R	1107R	1236R	1443R	...	1631R	1821R	...
Westbourne, opp. Norbridge Social Club	0720	0759	...	0848	1110	1239	1447	...	1634	1824	...
Ipswich, High Street, Westgate Street	0726	0805	...	0854	1116	1245	1453	1522	1640	1830	...
Ipswich, Old Cattle Market Bus Station Stand M	0915	0856	1118	1247	1455	1524	1642	1832	...
Ipswich, Rail Station Forecourt	0731	0810

Code: C - Only serving when Suffolk One is open (drop off only) R - Setting down by request only Sch - Operates when SCC schools are open

NSch - Operates when SCC schools are closed

Service No:

110 112 113 114

Simonds Countrylink

Ipswich — Eye — Diss

Monday - Friday

110 via Mellis 112 via Stuston

111 via Claydon and Mendlesham 114 via Claydon and Debenham

(No Service on Public or Bank Holidays)

Service:	113	114	114	113	114	113	114	114	114	114	113	114
	Sch	NSch						NSch	Sch			
Chantry, Suffolk One	1600C	...
Ipswich, Station Bridge	1610	...
Ipswich, Rail Station Forecourt	1705	1840
Ipswich, Old Cattle Market Bus Station Stand M	...	0745	0805	0935	1140	1305	1405	1515	1620	1620	1715	1845
Ipswich, Tower Ramparts Bus Station Stand FF	...	0748	0808	0938	1143	1308	1408	1518	1623	1623	1718	1848
Westbourne, Norbridge Social Club	0817	0947	1151	1316	1417	1527	1632	1632	1727	1857
Ipswich, Whitehouse, Goddard Road, Asda	0821	0951	1155	1320	1421	1531	1636	1636	1731	1901
Bramford, Papermill Lane opp Whitton Layer	...	0800
Claydon, High School (School days)	...	0810
Claydon, Ipswich Road, The Greyhound P.H.	...	0815	0825	0955	1159	1324	1425	1535	1640	1640	1735	1905
Claydon, Edinburgh Gardens	1201	1326	1427	1537
Barham, Norwich Road, Sorrel Horse P.H.	...	0817	0827	0957	1203	1328	1429	1539	1642	1642	1737	1907
Little Stonham, Stowmarket Road, Valley Farm	1005	...	1335	1744	...
Forward Green, Blacksmiths La, opp Weylands Farm	1009	...	1339	1748	...
Mendlesham Green, Green Man Corner	1013	...	1343	1752	...
Mendlesham, Kings Head	1017	...	1347	1755	...
Brocksford Street, A140, opp Wetheringsett Turn Bus Shelter	1020	...	1350	1758	...
Thwaite, A140, opp Bucks Head PH	1022	...	1352	1800	...
Stoke Ash, A140, White Horse PH	1026	...	1356	1804	...
Little Stonham, Valley Farm	0835	...	1209	...	1435	1545	1648	1648	...	1913
Stonham Aspal, Stowmarket Road, Pound Corner	0838	...	1212	...	1438	1548	1651	1651	...	1916
Mickfield, Stonham Road, Crossroads	0842	...	1216	...	1442	1552	1655	1655	...	1920
Coddenham, Village Store	...	0825
Crowfield, Manor View	...	0830
Pettaugh, Post Office	...	0833
Winston Green, Debenham Road	...	0835
Debenham, High School / Leisure Centre	...	0846	0846	...	1220	...	1446	1600	1659	1659	...	1924
Debenham, High Street, opp Bus Shelter	...	0849	0849	...	1223	...	1449	1604	1702	1702	...	1927
Aspal, B1077, Valley Cottage	...	0852	0852	...	1226	...	1452	1607	1705	1705	...	1930
Beddingfield, The Street, The Pump (School days Only)	1610
Rishangles, B1077, opp Baptist Church	...	0856	0856	...	1230	...	1456	1616	1709	1709	...	1934
Thorndon, opp Black Horse P.H.	0700	0900	0900	1030	1234	1400	1500	1620	1713	1713	1808	R
Thorndon, B1077, The Wash	0702	0902	0902	1032	1236	1402	1502	1622	1715	1715	1810	1936
Occold, The Street, opp School	0705	0905	0905	1035	1239	1405	1505	1625	1718	1718	1813	1939
Eye, Lambeth Street, Town Hall Bus Shelter	0710	0910	0910	1040	1244	1410	1510	1630	1723	1723	1818	1944

Guaranteed connection to 113/114 with no need to change buses

Service:	112	112	112	110	112	112	112	112	112	112	112	112
	Sch	NSch						NSch	Sch			
Eye, Lambeth Street, Town Hall Bus Shelter	0710	0910	0910	1040	1244	1630	1723	1723	1818	1944
Yaxley, opp. Cherry Tree P.H.	1043
Mellis, opp. Railway Tavern P.H.	1046
Wortham, Mellis Road Bus Shelter	1050
Palgrave, Church	1053
Brome, B1077, opp. Daksmere Entrance	0713	0913	0913	...	1247	1633	1726	1726	1819	1947
Stuston, Stuston Road, Roundabout	0716	0916	0916	...	1250	1636	1729	1729	1822	1950
Diss, Victoria Road/ Rose Lane Bus Stop	0719	0919	0919	1055	1253	1639	1732	1732	1825	R
Diss, Bus Station Park Road	0722	0922	0922	1058	1256	1642	1735	1735	1828	R

Code: C - Only serving when Suffolk One is open R - Setting down by request only Sch - Operates when SCC schools are open

N/Sch - Operates when SCC schools are closed

Service No:

112 113 114**Simonds Countrylink****Diss → Eye → Ipswich****Saturday Only**

112 via Stuston

(No Service on Public or Bank Holidays)

113 via Mendlesham and Claydon 114 via Debenham and Claydon

Service:	112	112	112	112	112	112	112
Diss, Bus Station, Park Road	0650	0730	1030	1230	1430	...	1630
Diss, Victoria Road/Vinces Road Bus Shelter	0653	0733	1033	1233	1433	...	1633
Stuston, Stuston Road, Roundabout	0655	0735	1035	1235	1435	...	1635
Brome, B1077, Oaksme Entrance	0658	0738	1038	1238	1438	...	1638
Eye, Lambseth Street, opp Town Hall	0703	0743	1043	1243	1443	...	1643
Guaranteed connection to 113/114 with no need to change buses							
Service :	114	113	114	113	114	114	113
Eye, Lambseth Street, opp Town Hall	0703	0743	1043	1243	1443	--	1643
Occold, The Street, School	0708	0748	1048	1248	1448	--	1648
Thorndon, B1077, The Wash	0713	0753	1053	1253	1453	--	1653
Thorndon, Black Horse PH	0715	0755	1055	1255	1455	--	1655
Stoke Ash, A140, opp White Horse PH	...	0800	...	1300	...	--	1700
Thwaite, A140, Bucks Head PH	...	0804	...	1304	...	--	1704
Brockford Street, A140, Wetheringsett Turn Bus Shelter	...	0808	...	1308	...	--	1708
Mendlesham, Kings Head PH	...	0811	...	1311	...	--	1711
Mendlesham Green, Green Man Corner	...	0815	...	1315	...	--	1715
Forward Green, Blacksmiths La, Weylands Farm	...	0818	...	1318	...	--	1718
Rishangles, B1077, Baptist Church	0720	...	1100	...	1500	--	...
Aspall, B1077, opp Valley Cottage	0724	...	1104	...	1504	--	...
Debenham, High Street, Bus Shelter	0728	...	1108	...	1508	--	...
Debenham, Leisure Centre	0730	...	1110	...	1510	--	...
Mickfield, Debenham Road, Crossroads	0735	...	1115	...	1515	--	...
Stonham Aspall, Stowmarket Road, Pound Corner	0738	...	1118	...	1518	--	...
Little Stonham, A1120, opp Brewery Farm	0745	0823	1125	1323	1525	--	1723
Barham, Norwich Road, opp Sorrel Horse PH	0753	0831	1133	1331	1533	--	1731
Claydon, Edinburgh Gardens	0755	0833	1135	1333	1535	1633	1733
Claydon, Ipswich Road, The Crown PH	0756	0834	1136	1334	1536	1634	1734
Ipswich, Whitehouse, Goddard Road, Asda	0800R	0838R	1140R	1338R	1540R	1638R	1738R
Westbourne, opp. Norbridge Social Club	0802	0840	1142	1340	1542	1640	1740
Ipswich, High Street, Westgate Street	0808	0846	1148	1346	1548	1646	1746
Ipswich, Old Cattle Market Bus Station Stand M	0810	0848	1150	1348	1550	1648	1748

Code: R - Setting down by request only

Service No:

112 113 114



Ipswich → Eye → Diss

Saturday Only

112 via Stuston

(No Service on Public or Bank Holidays)

113 via Claydon and Mendlesham 114 via Claydon and Debenham

Service:	114	113	114	113	114	114	113
Ipswich, Old Cattle Market Bus Station Stand M	0820	0920	1210	1500	1615	1745	1810
Ipswich, Tower Ramparts Bus Station Stand FF	0823	0923	1213	1503	1618	1748	1813
Westbourne, Norbridge Social Club	0829	0929	1219	1509	1624	1754	1819
Ipswich, Whitehouse, Goddard Road, Asda	0833	0933	1223	1513	1628	1758	1823
Claydon, Ipswich Road, The Greyhound PH	0837	0937	1227	1517	1632	1802	1827
Claydon, Edinburgh Gardens	0838	0938	1228	1518	1633	1803	1828
Barham, Norwich Road, Sorrel Horse PH	0840	0940	1230	1520	...	1805	1830
Little Stonham, Stowmarket Road, Valley Farm	...	0948	...	1528	R
Forward Green, Blacksmiths La, opp Weylands Farm	...	0952	...	1532	R
Mendlesham Green, Green Man Corner	...	0956	...	1536	R
Mendlesham, Kings Head PH	...	1000	...	1540	R
Brockford Street, A140, opp Wetheringsett Turn Bus Shelter	...	1003	...	1543	1845
Thwaite, A140, opp Bucks Head PH	...	1005	...	1545	1847
Stoke Ash, A140, White Horse PH	...	1009	...	1549	1851
Mickfield, Stonham Road, Crossroads
Little Stonham, Valley Farm	0848	...	1238	1813	...
Stonham Aspal, Stowmarket Road, Pound Corner	0851	...	1241	1816	...
Mickfield, Stonham Road, Crossroads	0855	...	1245	1820	...
Debenham, High School / Leisure Centre	0859	...	1249	1824	...
Debenham, High Street, opp Bus Shelter	0902	...	1252	1827	...
Aspall, B1077, Valley Cottage	0905	...	1255	1830	...
Rishangles, B1077, opp Baptist Church	0909	...	1259	1834	...
Thorndon, Black Horse PH	0913	1013	1303	1553	...	R	R
Thorndon, B1077, The Wash	0915	1015	1305	1555	...	R	R
Occold, The Street, opp School	0918	1018	1308	1558	...	R	R
Eye, Lambseth Street, Town Hall Bus Shelter	0923	1023	1313	1603	...	1840	1856

Guaranteed connection to 113/114 with no need to change buses

Service:	112	112	112	112	112	112
Eye, Lambseth Street, Town Hall Bus Shelter	0923	1023	1313	1603	...	1840 1856
Brome, B1077, Opp Oakmere Entrance	0926	1026	1316	1606	...	1843 1859
Stuston, Stuston Road, Roundabout	0929	1029	1319	1609	...	1846 1902
Diss, Victoria Road/Rose Lane Bus Stop	0932	1032	1322	1612	...	1849 1905
Diss, Bus Station Park Road	0935	1035	1325	1615	...	1852 1908

Code:R - Setting down by request only

September 2022

wk	Monday	Tuesday	Wednesday	Thursday	Friday	Saturday	Sunday
				1	2	3	4
					Library Van Village Hall Car Park 12.20pm		Picnic Forward Green 12.30
	5	6	7	8	9	10	11
	P.C meeting Village Hall 7.30pm		Over 60's Oulton Broad		"Grave Talk" with coffee & cake Village Hall 9 - 10.30	Supper Evening Southern Fried Chicken Village Hall 7pm	St Mary's Service 11am
	12	13	14	15	16	17	18
	Quiz Village Hall 7.30pm				Coffee & Cake Village Hall 10.30 - 12		Village Walk 2pm
	19	20	21	22	23	24	25
		WI Singing Nettles Village Hall 7.30pm				Shared Harvest Supper Village Hall 7pm	St Mary's Harvest Service 11am
	26	27	28	29	30		
					Library Van Village Hall Car Park 12.20pm		

October 2022

WK	Monday	Tuesday	Wednesday	Thursday	Friday	Saturday	Sunday
						1	2
	3	4	5	6	7	8	9
			Over 60's Harvest Festival			ESCC Race Night Stonham Barns	St Mary's Service 11am
	10	11	12	13	14	15	16
	Quiz Village Hall 7.30pm				Coffee & Cake Village Hall 10.30 - 12	Supper Evening Mobile Pizza Van Village Hall 7pm	
	17	18	19	20	21	22	23
		WI AGM & Social Evening Village Hall 7.30pm					St Mary's Service 11am
	24	25	26	27	28	29	30
					Library Van Village Hall Car Park 12.20pm		

November 2022

WK	Monday	Tuesday	Wednesday	Thursday	Friday	Saturday	Sunday
		1	2	3	4	5	6
			Over 60's AGM		RECORDER DEADLINE		
	7	8	9	10	11	12	13
	PC Meeting Village Hall 7.30pm				Coffee & Cake Village Hall 10.30 - 12		St Mary's Service of Light 10.50am
	14	15	16	17	18	19	20
	Quiz Village Hall 7.30pm					ESCC Awards Stonham Barns Supper Evening Chilli Village Hall 7pm	
	21	22	23	24	25	26	27
		WI Medicines Village Hall 7.30pm			Library Van Village Hall Car Park 12.20pm		St Mary's Service 11am
	28	29	30				

USEFUL CONTACT NUMBERS

Police (Non Emergency)	101
NHS (Non Emergency)	111
Suffolk Joint Emergency Planning Unit	01473 265321
Suffolk Police HQ (Non Emergency)	01473 613500
Suffolk Police Direct	01473 613997
Suffolk Fire & Rescue (Non Emergency)	01473 588888
Environment Agency Incident Helpline	0800 80 70 60
Environment Agency Floodline	0345 988 1188
Suffolk County Council	0345 6066 067
Gas	0800 111 999
Electricity (Power Cuts & Network Emergencies)	105 08007 838 838
Anglian Water	03457 145 145
Essex & Suffolk Water	03457 820 999
Dial A Ride (Optua Transport)	01449 614271
Suffolk Link	01449 616000

VILLAGE CONTACTS

Earl Stonham Parish Council Street Lighting Fault Line	0800 591055
Earl Stonham Recorder (Deb/Margaret)	711461/711779
Earl Stonham Trust (Jennie Griffiths)	711794
Earl Stonham Website (Mark Gillett)	711457
Parish Clerk (Jennie Blackburn)	721369
WI (Christine Double/Lindsey Stone)	07775 507083/ 711602
Over 60's (Joan & Vera)	711294/710128
Village Hall Bookings (Deb Turner)	711461
Neighbourhood Watch (Tony Fowler)	711159
Theatre Guild (David Kirk)	710300
Cricket Club (Simon Edgar)	711572
Parish Room (Frankie Wicks)	711222